

**Disclaimer:**

This presentation has been produced in the context of a seminar/conference organized with the assistance of the European Union. It reflects the views only of the author, and the European Union cannot be held responsible for any use, which may be made of the information contained therein. The contents of this presentation are the sole responsibility of the author and can in no way be taken to reflect the views of the European Union or the European Union Academic Programme Hong Kong.



This project is co-funded  
by the European Union

City of two extremes

Where are we heading?

2014













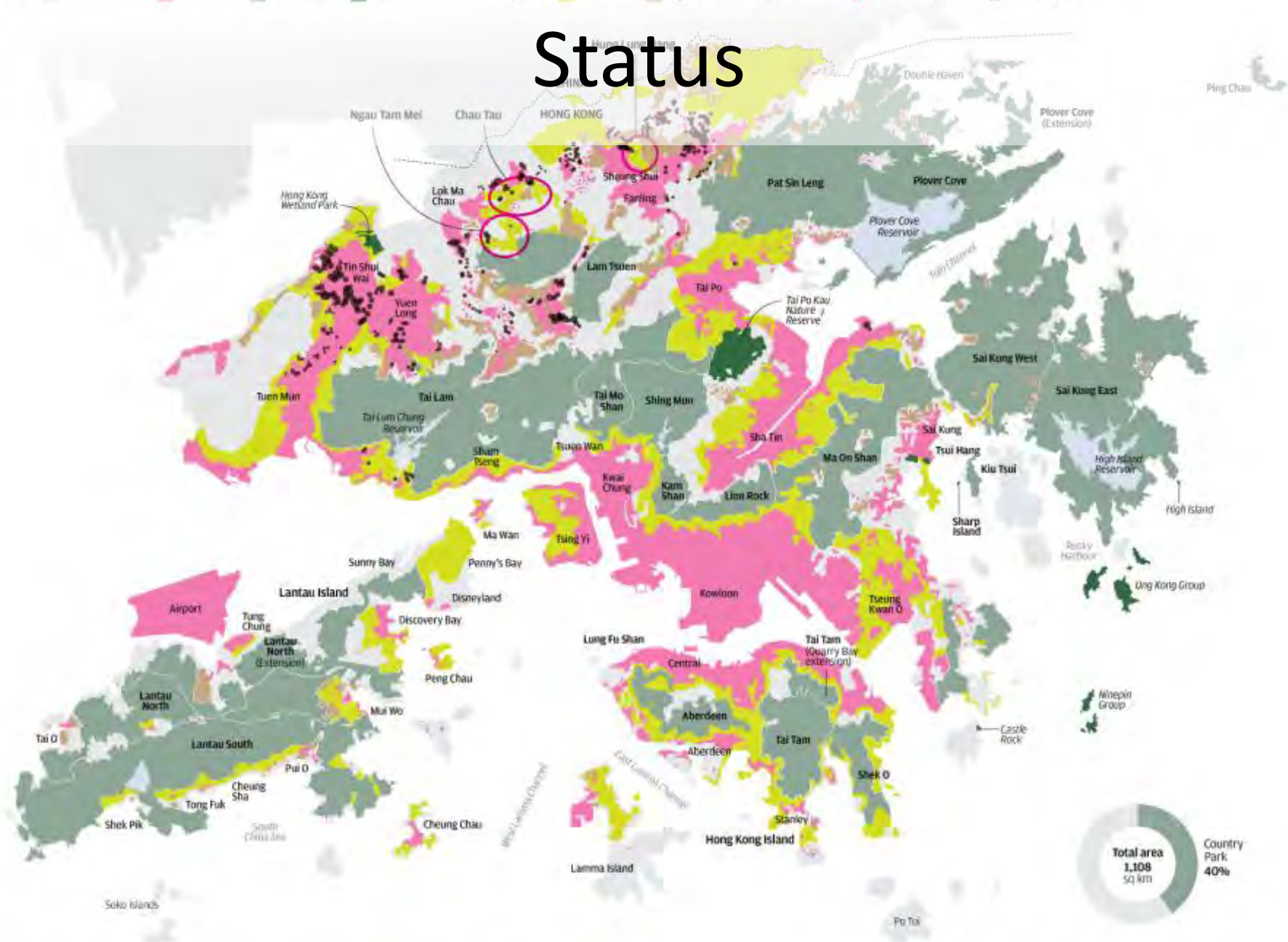






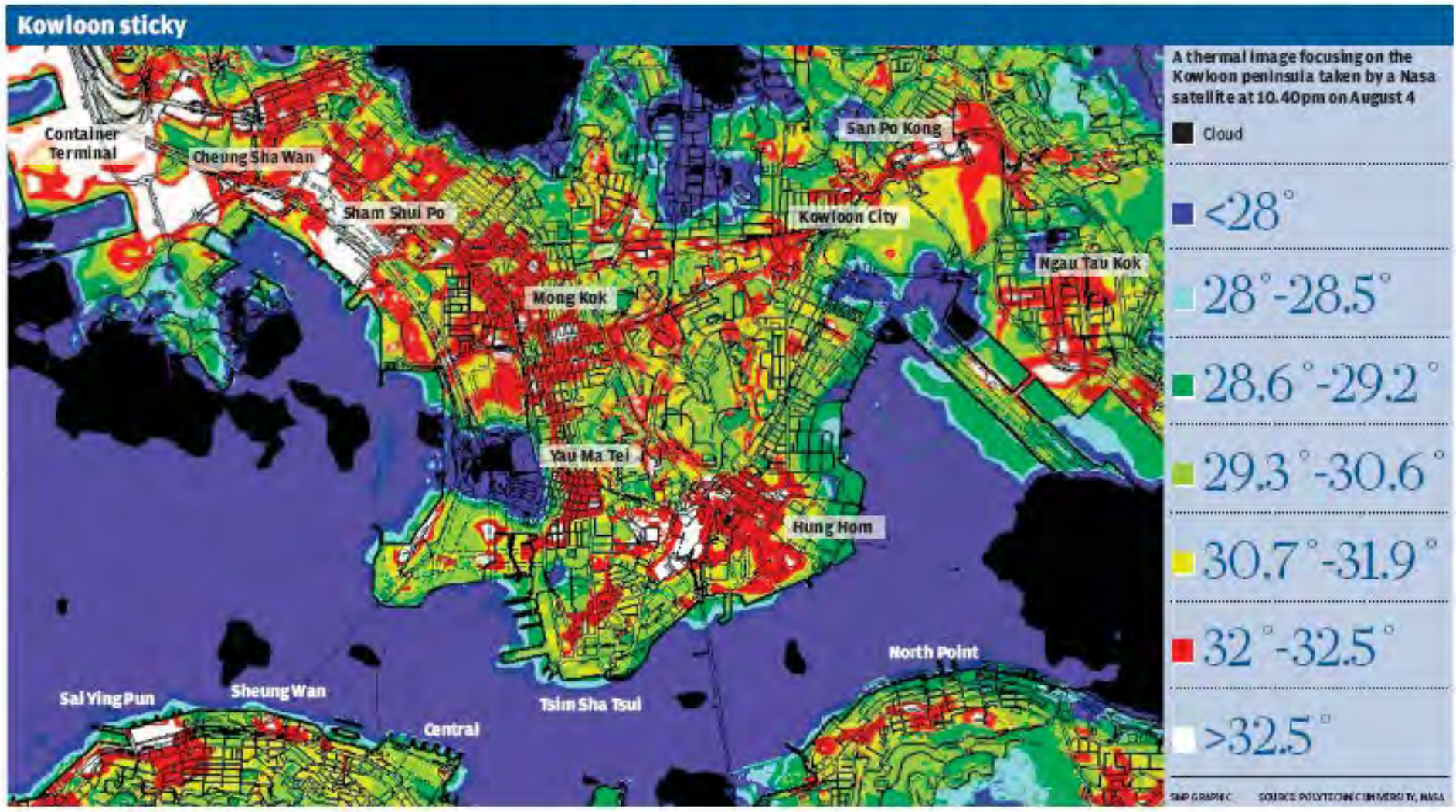
# Status

Key: Other land uses Urban area Country park Special area (outside country park) Green belt Agricultural land Brownfields Potential sites for flats suggested by experts



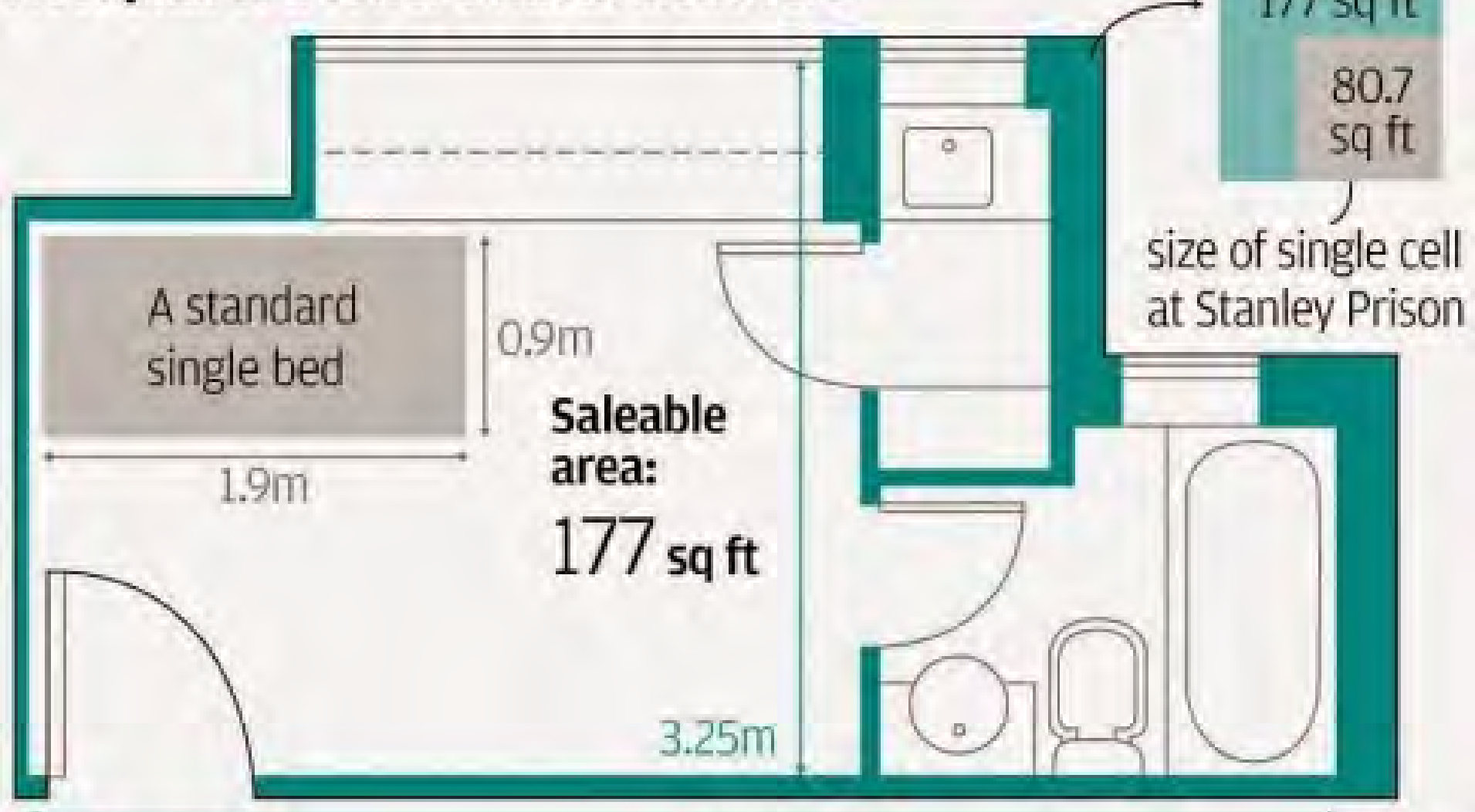


# 10.40pm. 32°C. The future's red hot for HK





# Floor plan of a Tower 3 flat at Mont Vert



Source: Mont Vert

5.8m

SCMP



# Future losses of biodiversity



Image Landsat  
Data SIO, NOAA, U.S. Navy, NGA, GEBCO

Image © 2014 TerraMetrics



更多車?  
More cars?



更多行人路?  
More space?







灣區“便捷通關”示意圖  
Cross-boundary Transport System

<b>Road Crossing</b>	<b>Average daily traffic 2008</b>	<b>Daily capacity</b>
Lok Ma Chau	27,883	32,000
Man Kam To	5,823	10,000
Sha Tau Kok	2,402	2,500
Shenzhen Bay Port	5,899	60,000
HK Zhuhai Macau Bridge	0	84,000
<b>TOTAL</b>	<b>42,007</b>	<b>188,500</b>

- HK private car fleet: only 433,202 (2011)
- No land for Park-and-Ride facilities at border
- Voluntary parking at rail stations
- Road pricing needed to incentivize drivers to stay away from congested districts.





Yau Ma Tei  
Ventilation  
Building

PolyU HK  
Community College

The  
Coronation

West Kowloon Highway







Central



# Central – Street level

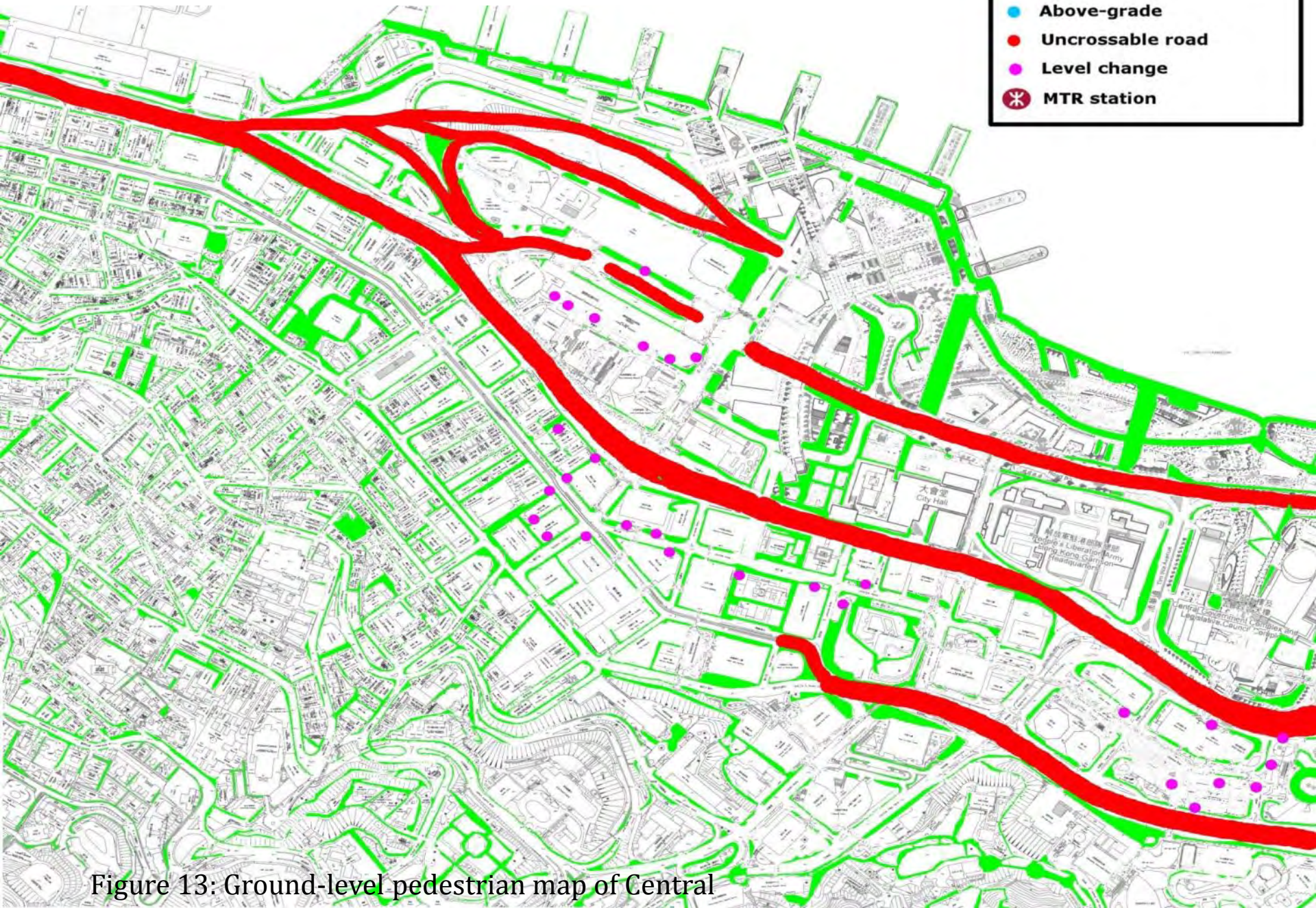
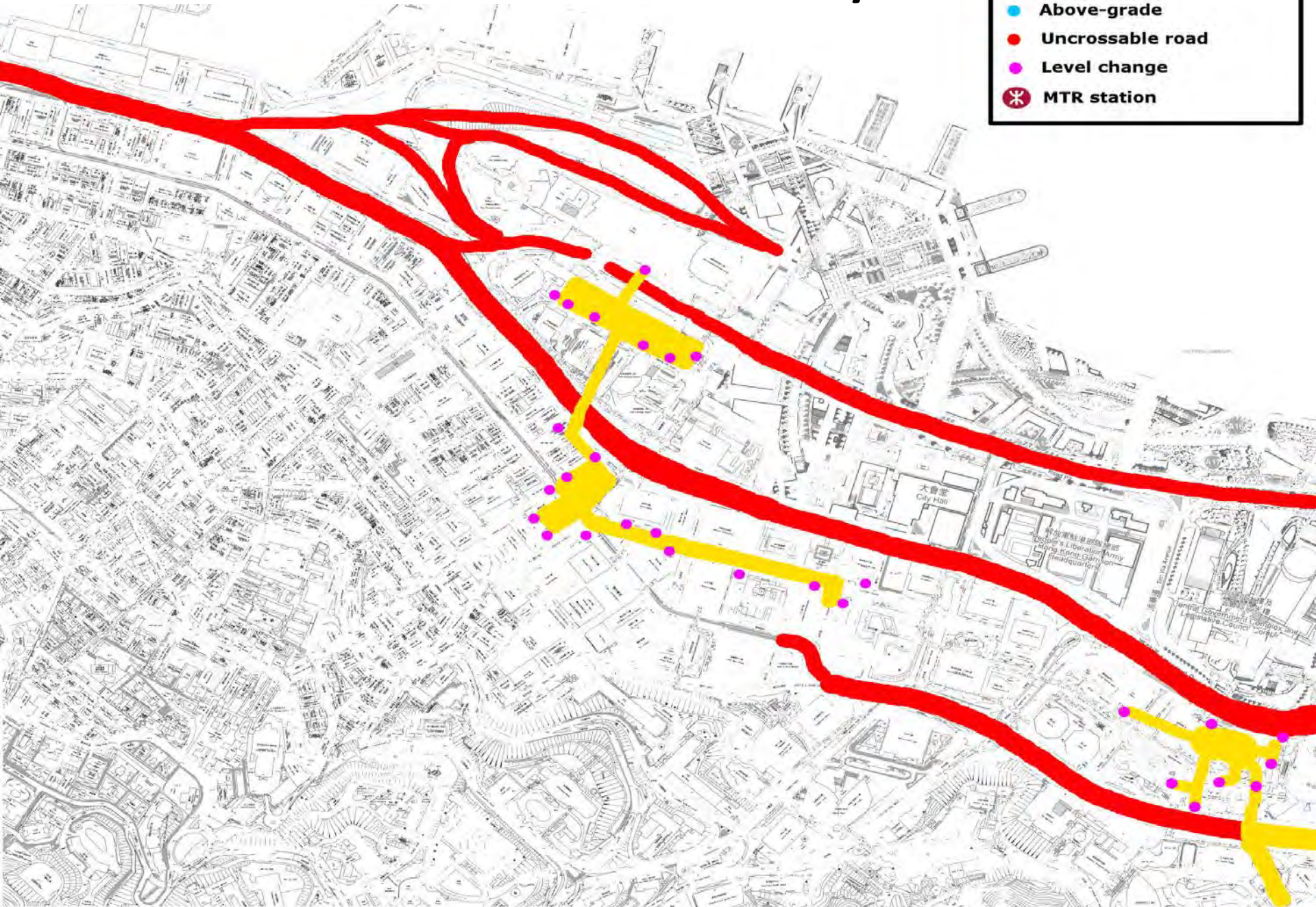
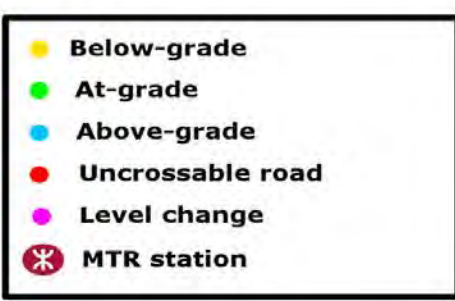


Figure 13: Ground-level pedestrian map of Central



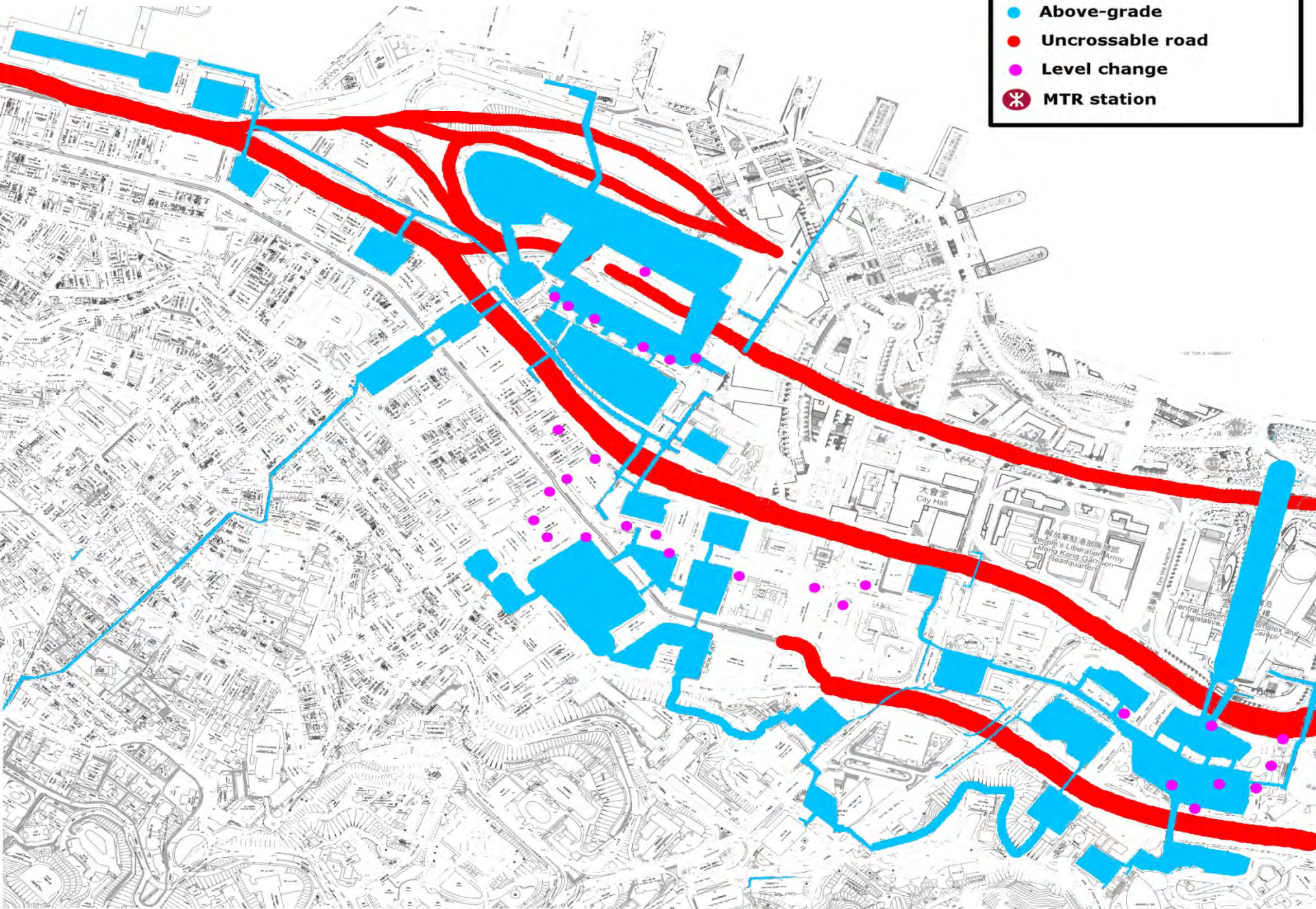
# Central – Subway





# Central – Elevated

- Below-grade
- At-grade
- Above-grade
- Uncrossable road
- Level change
- MTR station





Tsim Sha Tsui





# Tsim Sha Tsui - Street

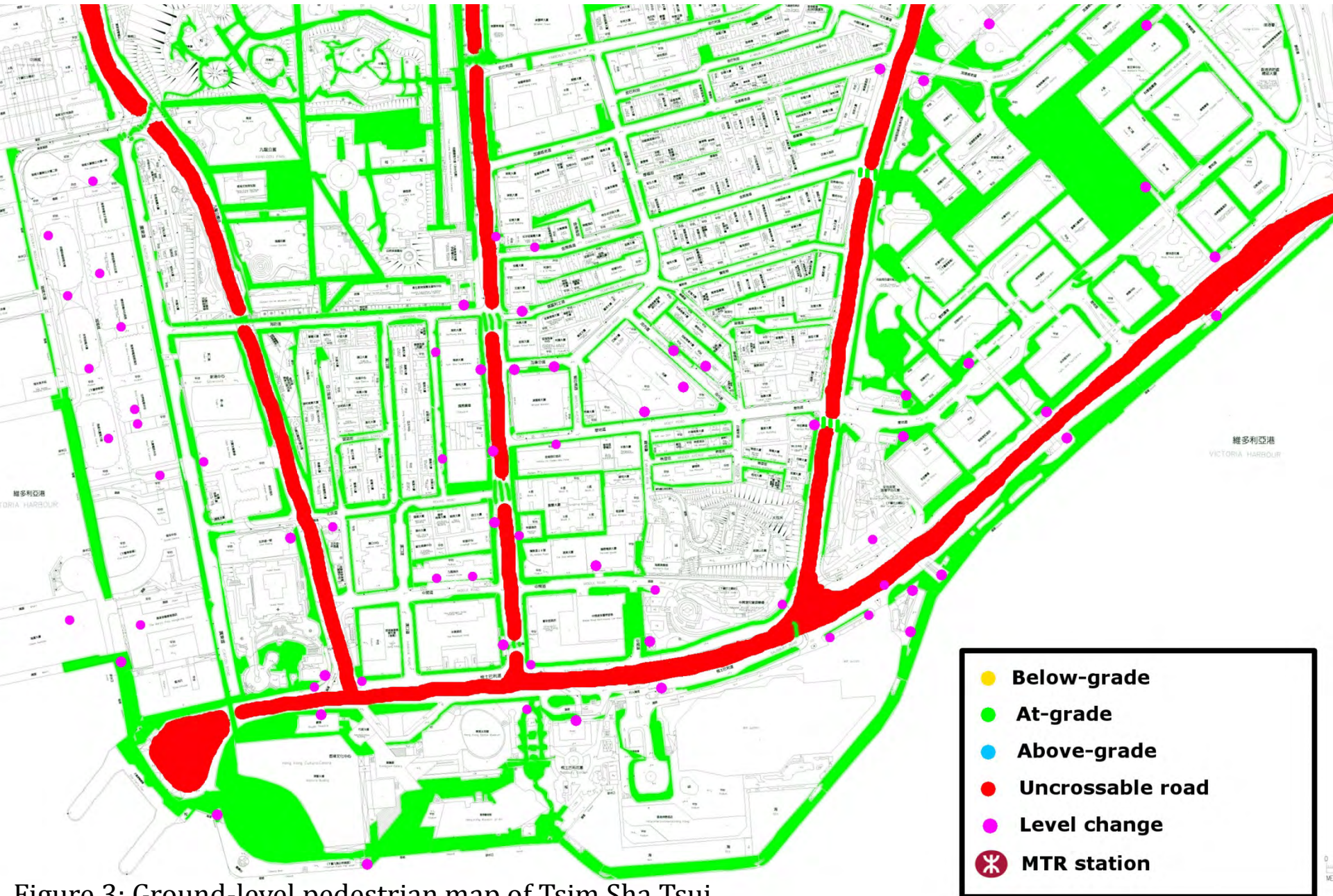
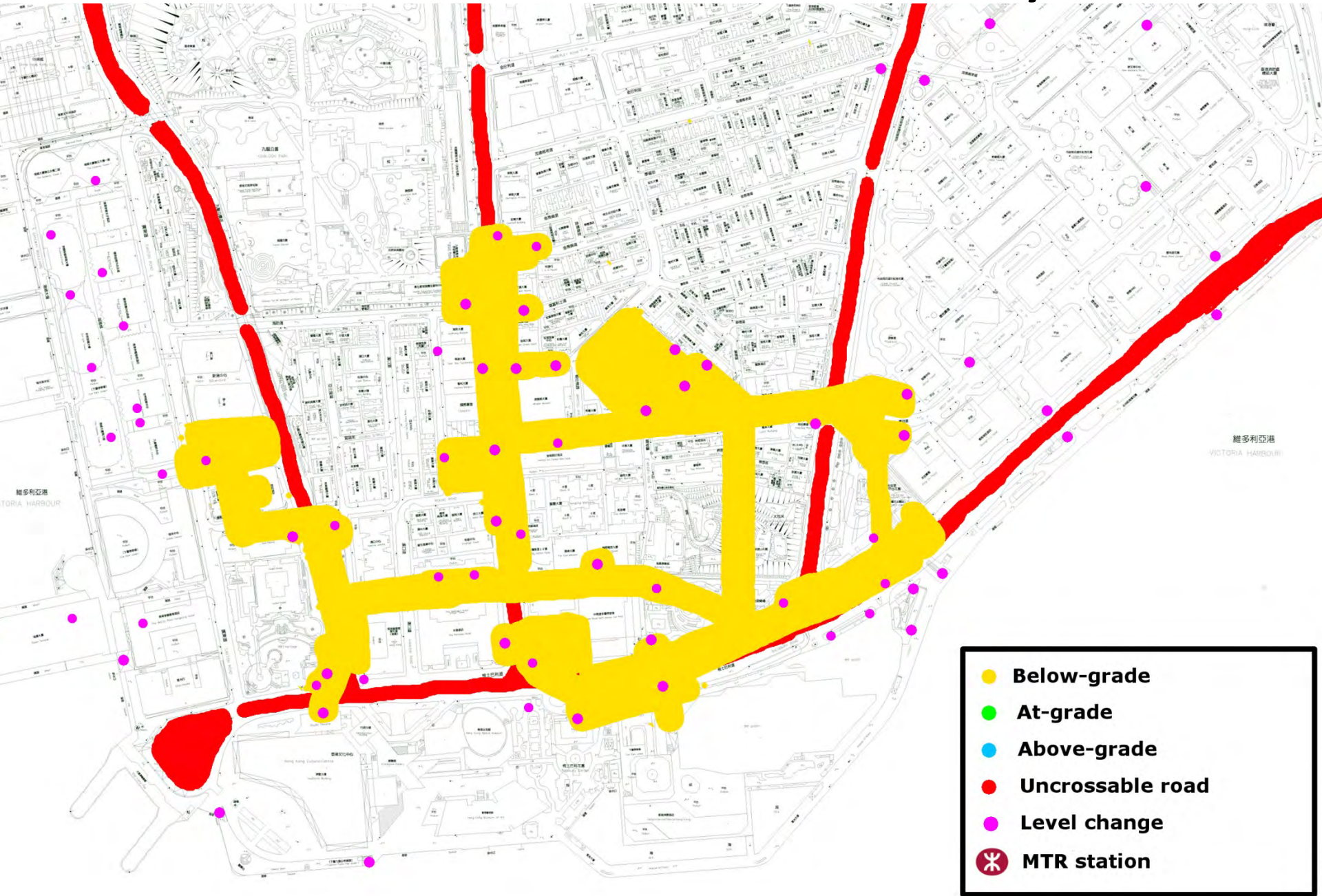


Figure 3: Ground-level pedestrian map of Tsim Sha Tsui



# Tsim Sha Tsui - Subway





# Tsim Sha Tsui - Elevated

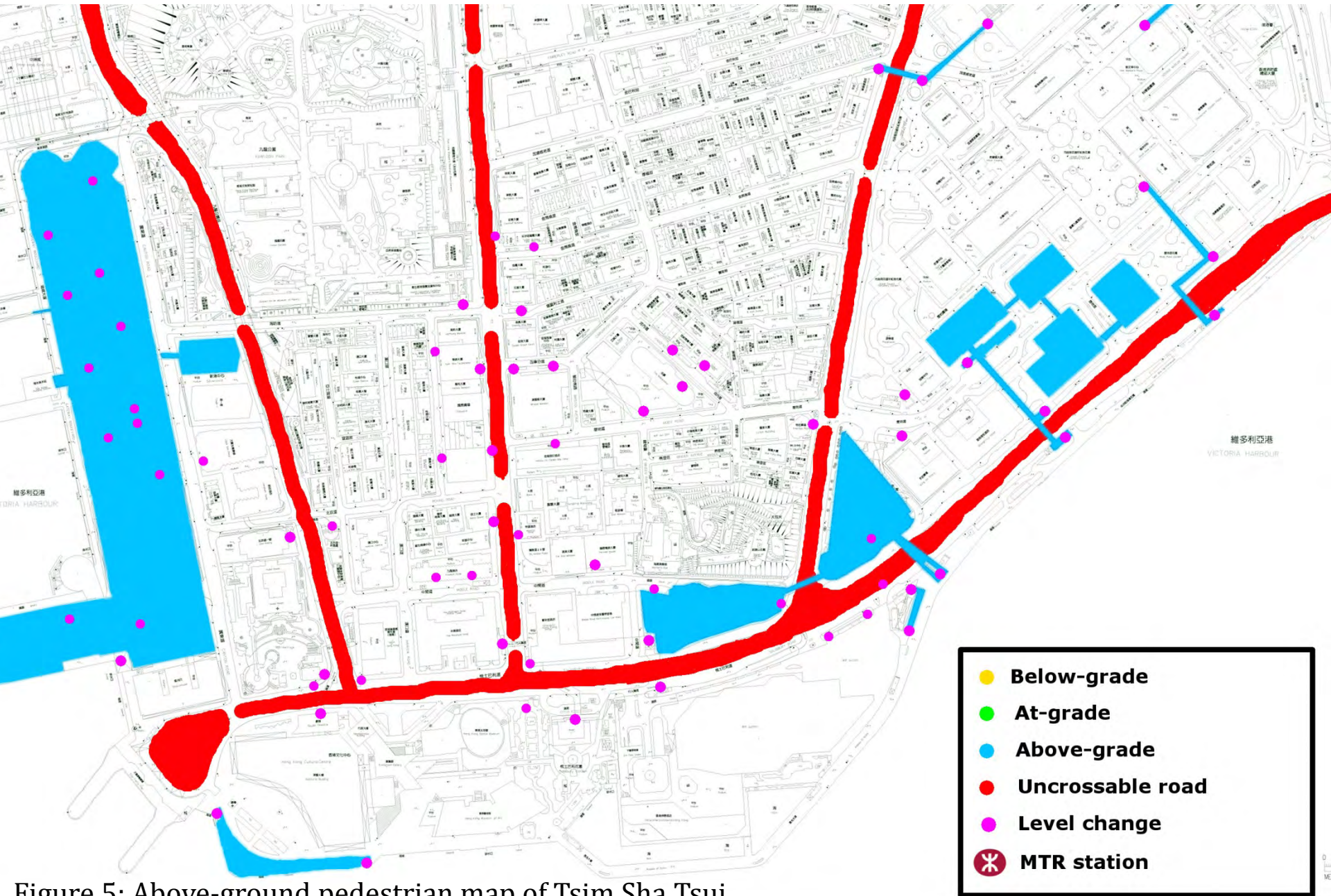


Figure 5: Above-ground pedestrian map of Tsim Sha Tsui



Tsuen Wan





# Tsuen Wan – Street level



Figure 18: Ground-level pedestrian map of Tsuen Wan



# Tsuen Wan – Subway





# Tsuen Wan – Elevated



Figure 20: Above-ground pedestrian map of Tsuen Wan

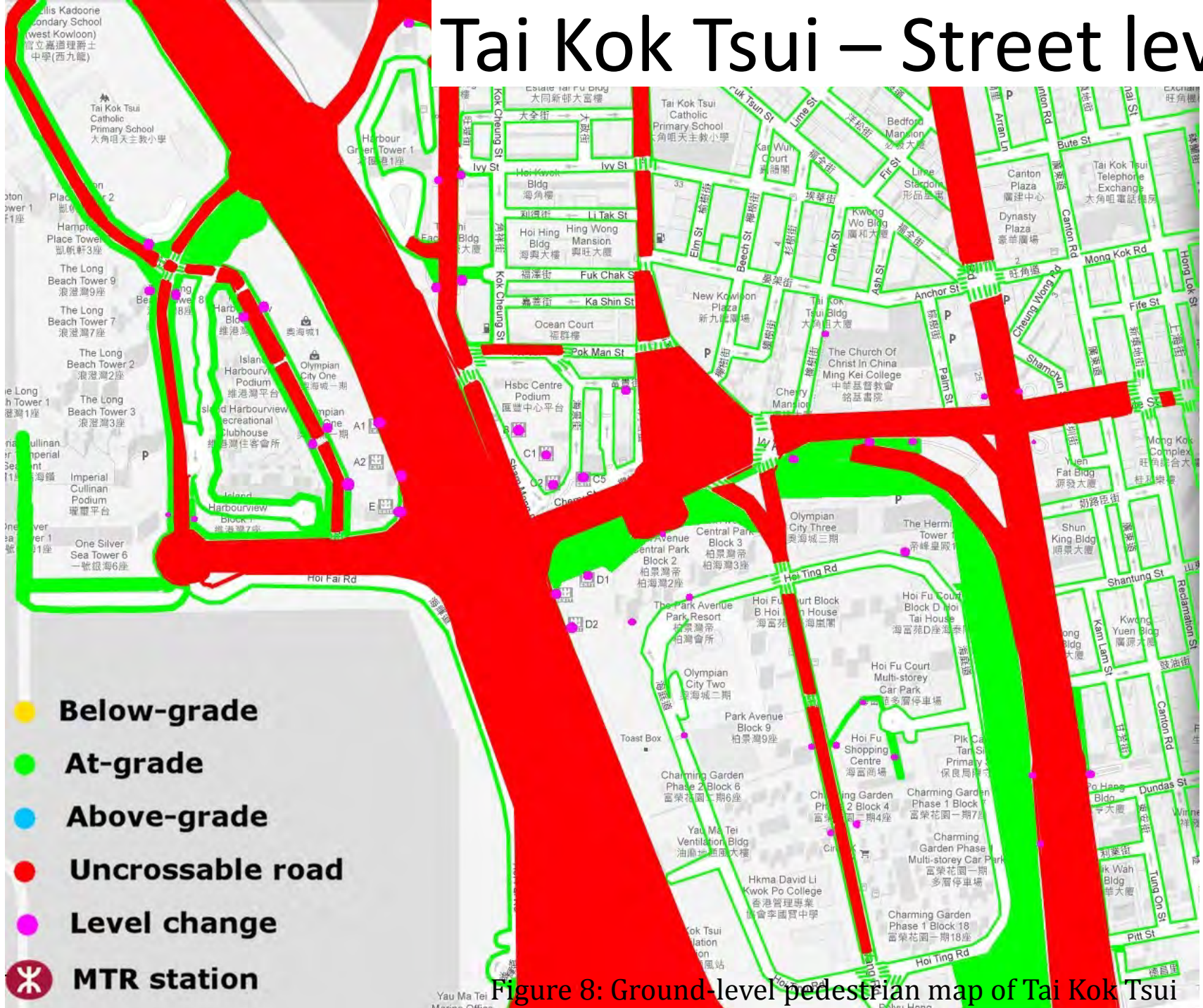


# Tai Kok Tsui





# Tai Kok Tsui – Street level

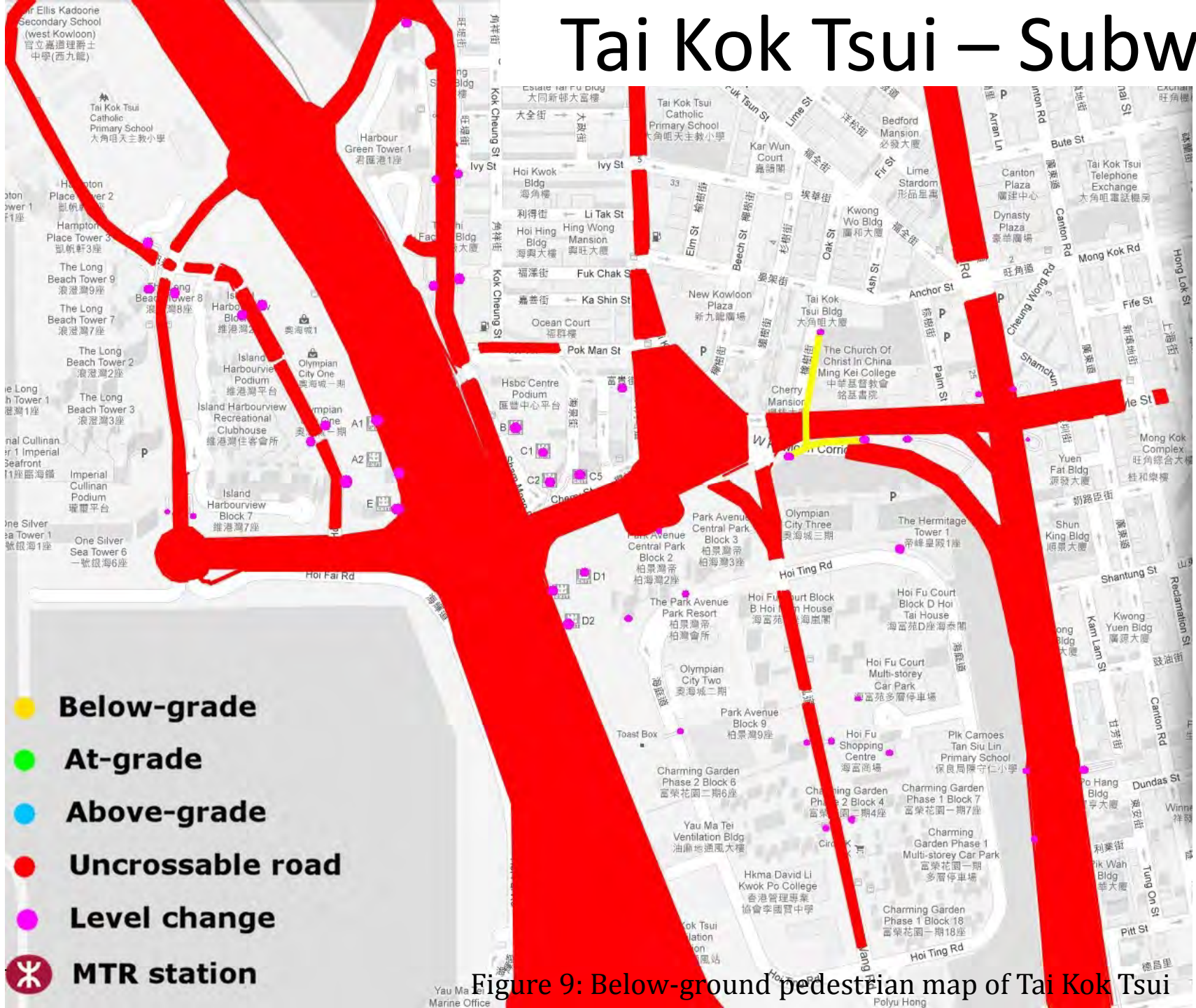


- **Below-grade**
- **At-grade**
- **Above-grade**
- **Uncrossable road**
- **Level change**
- ✳ **MTR station**

Figure 8: Ground-level pedestrian map of Tai Kok Tsui



# Tai Kok Tsui – Subway



- **Below-grade**
- **At-grade**
- **Above-grade**
- **Uncrossable road**
- **Level change**
- ✳ **MTR station**

Figure 9: Below-ground pedestrian map of Tai Kok Tsui



# Tai Kok Tsui – Elevated

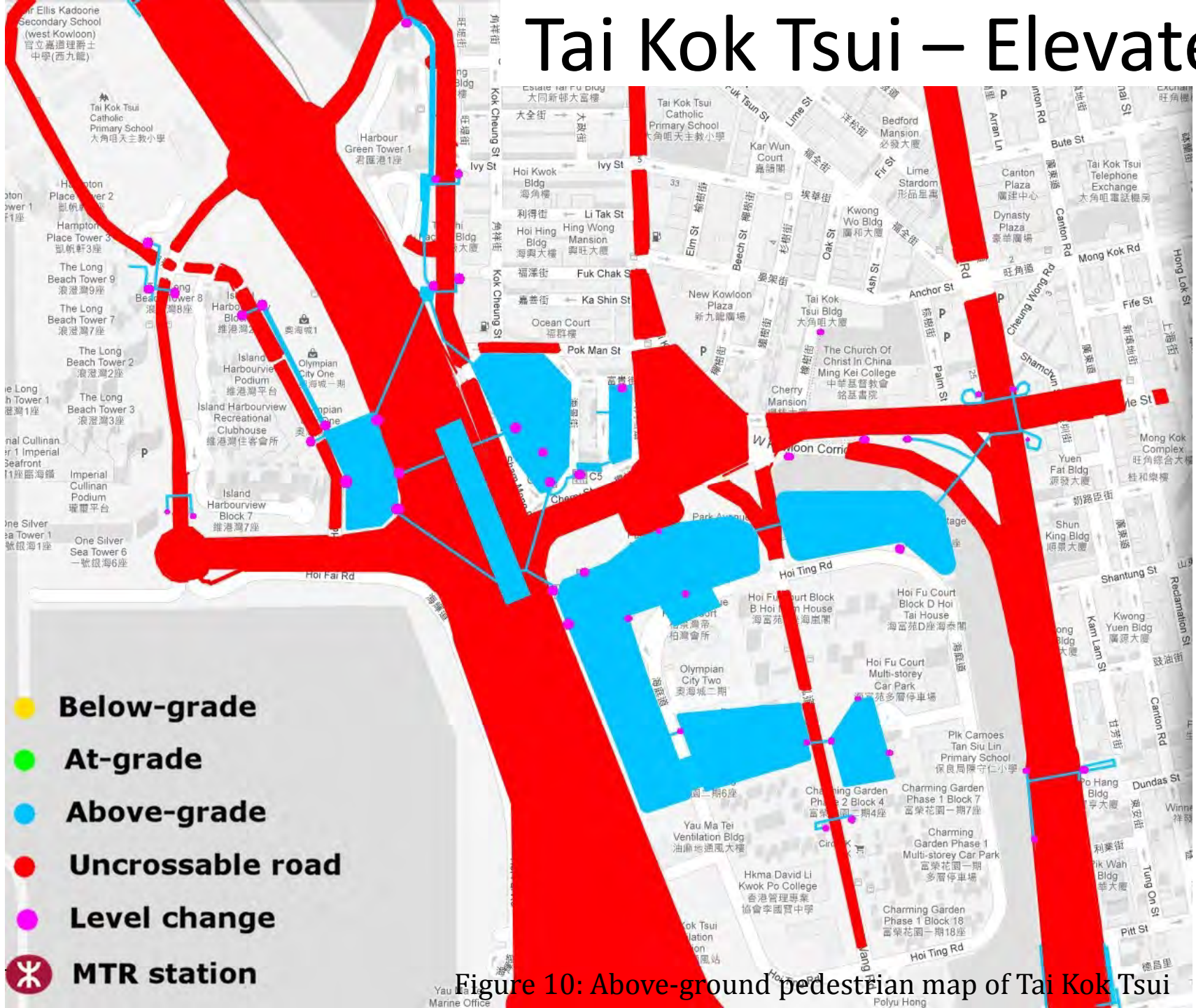


Figure 10: Above-ground pedestrian map of Tai Kok Tsui



... Mall

# Elevation changes







**Forced underground**





**Obstructions: Railing cabinets**



# Detours





# Fighting to cross!



Mong Kok Road and Tung Choi Street





沉黙

KEEP CALM  
AND  
BE ALERT

對不起，  
為未來，  
謝謝您。

今天撐到底

今日香港  
New Wave





自由

自由

革命

1  
2  
3  
4  
5  
6  
7  
8  
9  
10  
11  
12  
13  
14  
15  
16  
17  
18  
19  
20  
21  
22  
23  
24  
25  
26  
27  
28  
29  
30  
31  
32  
33  
34  
35  
36  
37  
38  
39  
40  
41  
42  
43  
44  
45  
46  
47  
48  
49  
50  
51  
52  
53  
54  
55  
56  
57  
58  
59  
60  
61  
62  
63  
64  
65  
66  
67  
68  
69  
70  
71  
72  
73  
74  
75  
76  
77  
78  
79  
80  
81  
82  
83  
84  
85  
86  
87  
88  
89  
90  
91  
92  
93  
94  
95  
96  
97  
98  
99  
100













A large advertisement billboard for SEIKO. It features a woman in a white dress and a large SEIKO watch. The text on the billboard includes "SEIKO" in large letters and "致力追求完美" (Dedicated to pursuing perfection) in Chinese. There is also smaller text and a logo for "行肯" (Hing Kan).

A grid of smaller advertisements for various services and businesses. The ads include "中原(工商舖)" (Central (Commercial Property)), "皇室桌球會" (Imperial Billiard Club), "Neway", "花園全開" (Garden Fully Open), "L'ORÉAL PARIS", "MK", and "現代教育" (Modern Education).

A building under construction with extensive scaffolding. A large white character "珠" (Pearl) is visible on the red facade. A black pole with the number "D 0468 A" is in the foreground. The building is surrounded by greenery and a sidewalk.





# Pavements missing





**Seats missing**





**Seats missing**





A man in a blue shirt and dark trousers is sitting in a red office chair, looking at his phone. He is in a room with blue doors and a tiled wall. A green cooler is on the floor next to him. The floor is wet with large puddles. A black box with red text is in the bottom left corner.

**Seats missing**





**Seats missing**



**Seats missing**







[www.missinglinks.hk](http://www.missinglinks.hk)

[Video](#)





**It's Civil Society!**