

Disclaimer:

This presentation has been produced in the context of a seminar/conference organized with the assistance of the European Union. It reflects the views only of the author, and the European Union cannot be held responsible for any use, which may be made of the information contained therein. The contents of this presentation are the sole responsibility of the author and can in no way be taken to reflect the views of the European Union or the European Union Academic Programme Hong Kong.



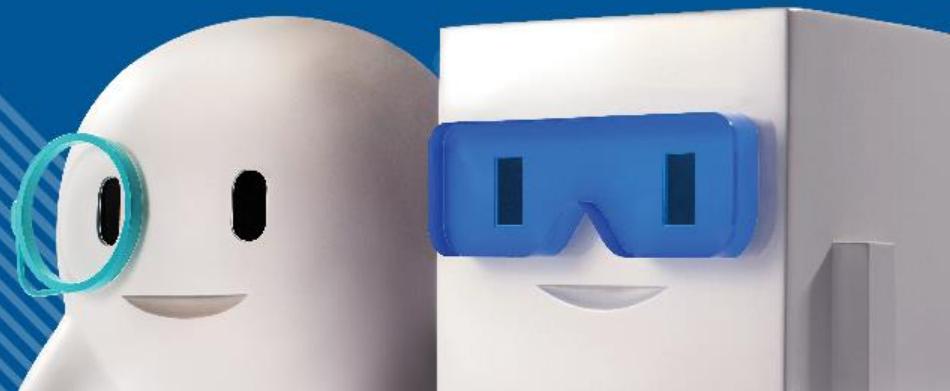
This project is co-funded
by the European Union

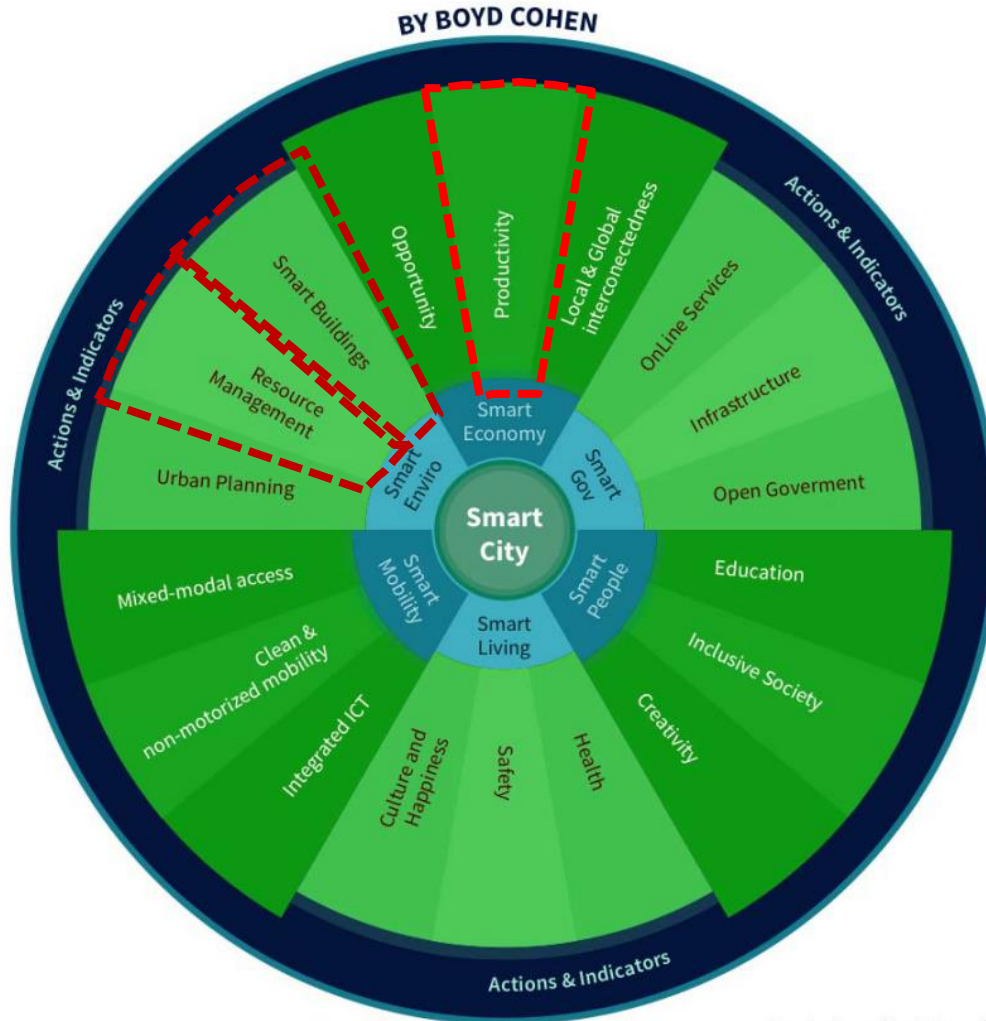


Smart Energy Management **Productivity Gain** & **Energy Saving** Hands-in-Hands

Ir. Raymond Fong, General Manager
Environmental Management Division
Hong Kong Productivity Council

25th November 2016





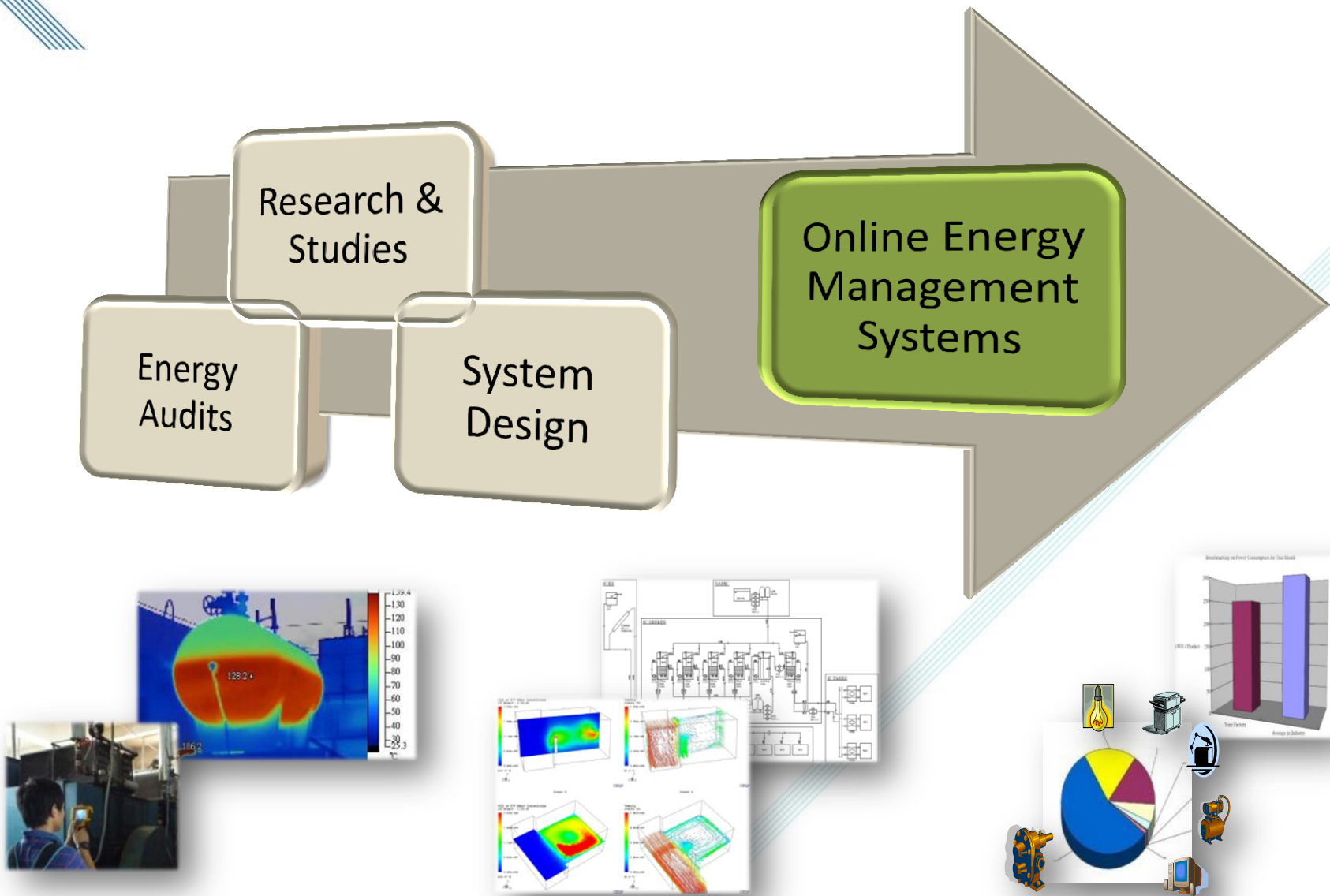
Smart Energy Management



The Smart City Wheel by Boyd Cohen.

Source: <https://www.wien.gv.at/english/transportation-urbanplanning/interview-boyd-cohen.html>

Re-designed by Manuchis.





Bluetooth Smart Meter
藍芽智能電錶



**Smart Meter Supplier's
Data Server**



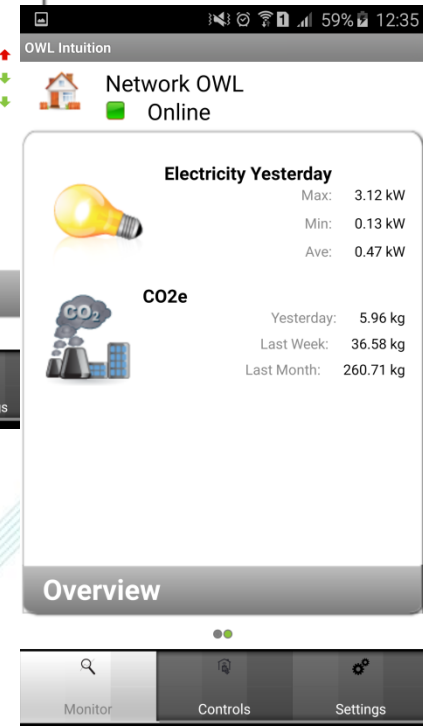
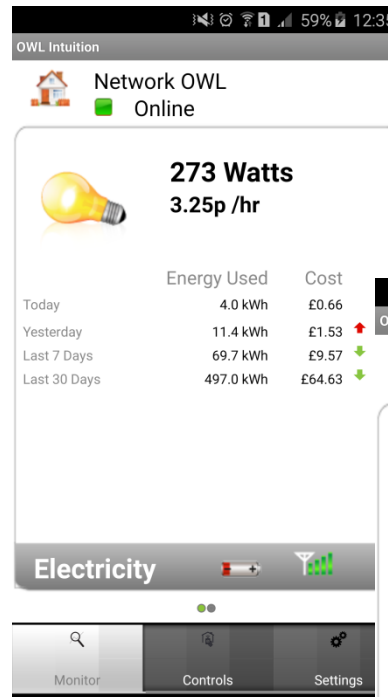
**Anywhere with
Internet Connection**

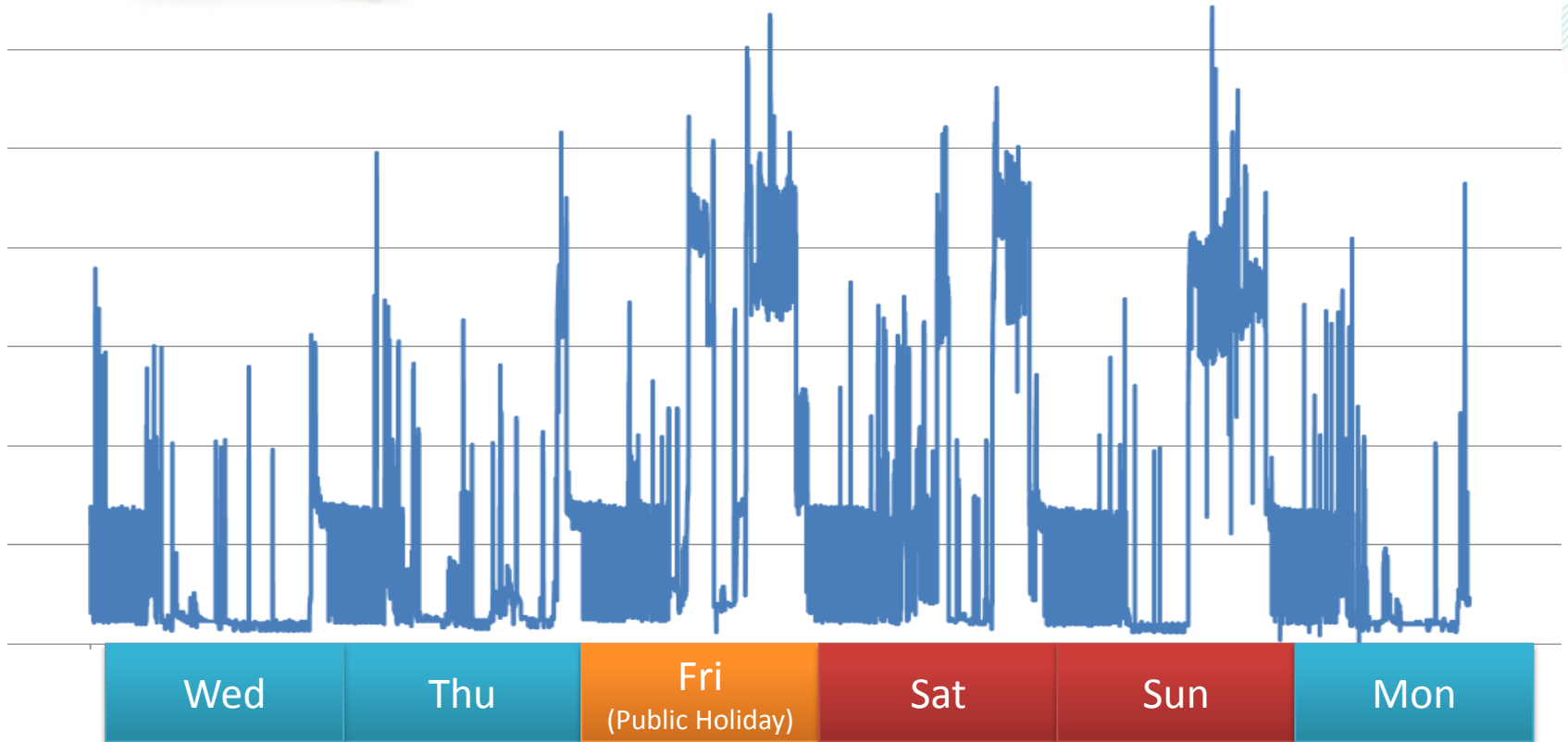


Data Transmitter



Smart Meter







APD Pot-Hunters Are Data-Mining at AE

Are you using 'too much' energy? Inquiring drug cops want to know.

BY JORDAN SMITH, FRI., NOV. 16, 2007

Source: <http://www.austinchronicle.com/news/2007-11-16/561535/>



21 SEPTEMBER 2011

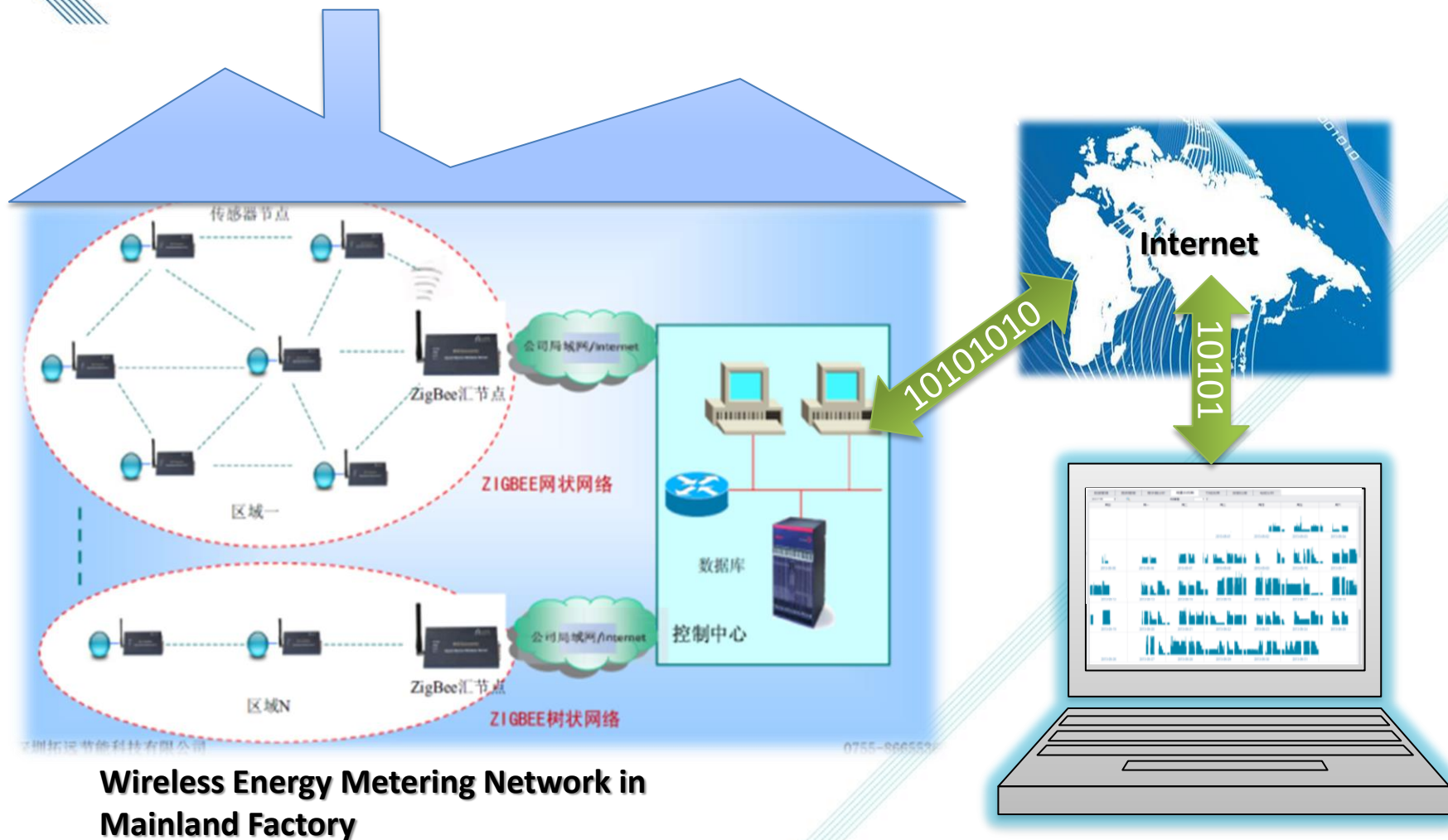
Researchers claim smart meters can reveal TV viewing habits

Münster, Germany — (METERING.COM) — September 21, 2011 - A group of researchers at the Münster University of Applied Sciences have claimed that it is possible to use the electricity usage data from a smart electricity meter to determine which programs a consumer is watching on a standard TV set.

Source: <https://www.metering.com/researchers-claim-smart-meters-can-reveal-tv-viewing-habits/>



Guangdong Province



Driving Force from Government

□ Aggressive Targets:

- Pledge under Paris accord COP21: **60-65%** Reduction in Carbon Intensity by 2030 (compared to 2005)
- **15%** Reduction in Energy Consumption per GDP in Thirteenth Five Year Plan by 2020 (compared to 2015)

□ Online Energy Information System Platforms in Shaoguan, Dongguan, Huizhou, Zhuhai, etc. to monitor industrial energy consumptions

东莞市经济和信息化局

东经信函〔2015〕824号

将能管中心作为“十三五”最重要的节能工程

关于“十三五”期间全面推进能耗在线监测
加强能管中心建设有关事项的通知

Driving Force from Buyers

- Buyers set targets for Suppliers, e.g.



- ✓ Walmart engage 70% of its China's sourced business in a factory energy efficiency program by 2017



- ✓ Marks & Spencer requested its top 100 factories to reduce their energy usage by an estimated 10% by 2020.

- Buyers require Suppliers to disclose GHG Emissions Information

Increasing Energy Cost

e.g. Government requires steam boilers to use cleaner fuels:



Coal



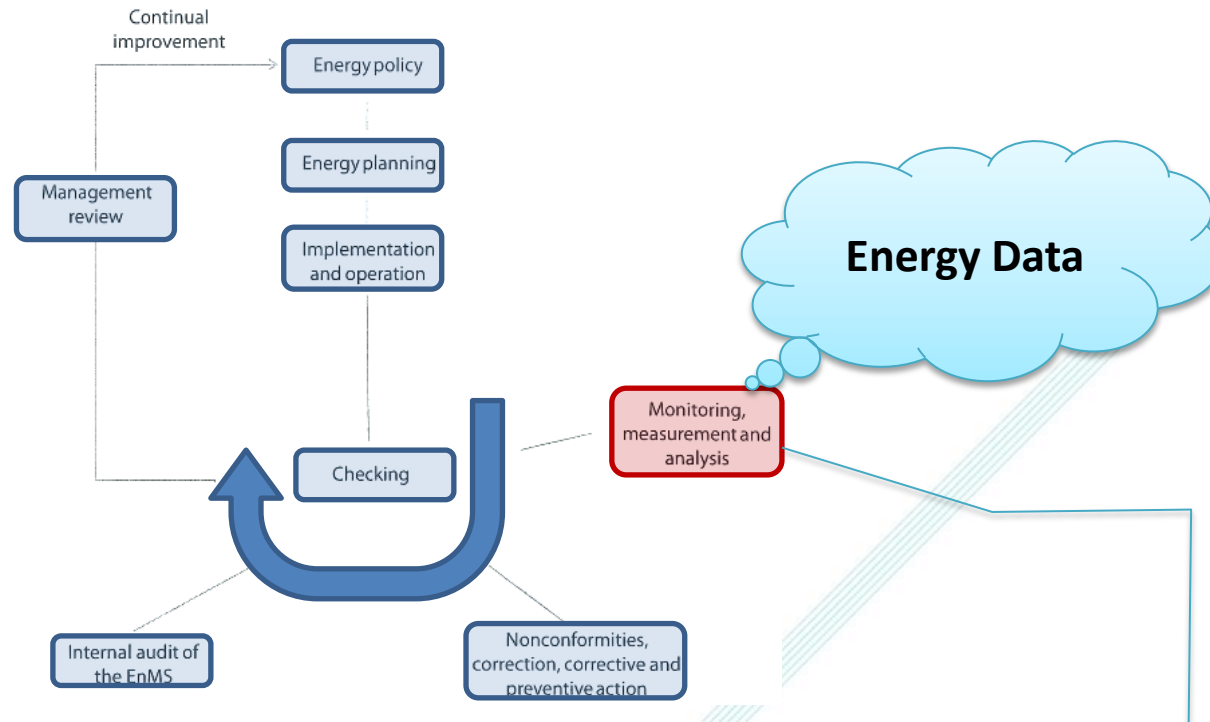
Wooden Biomass
Fuel Pellets



Natural
Gas

Corporate Social Responsibility (CSR)

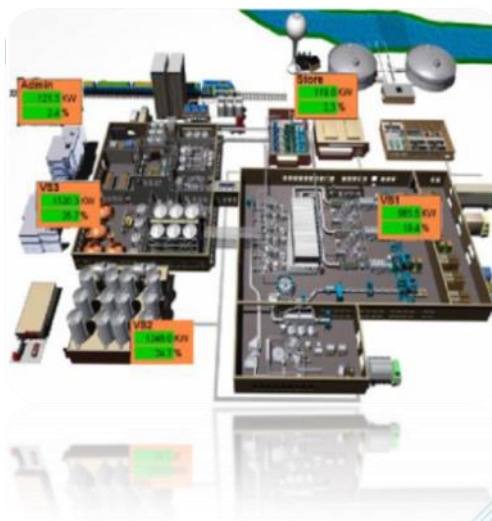
ISO 50001 (Energy Management Systems):



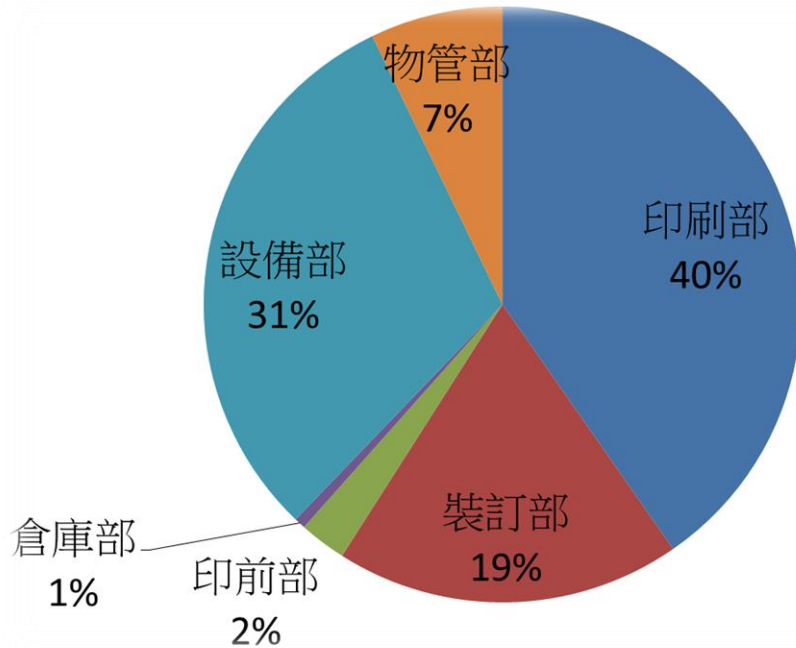
“...complete monitoring and measurement systems connected to a software application capable of consolidating data and delivering automatic analysis.”

Customized User Interface & Reports

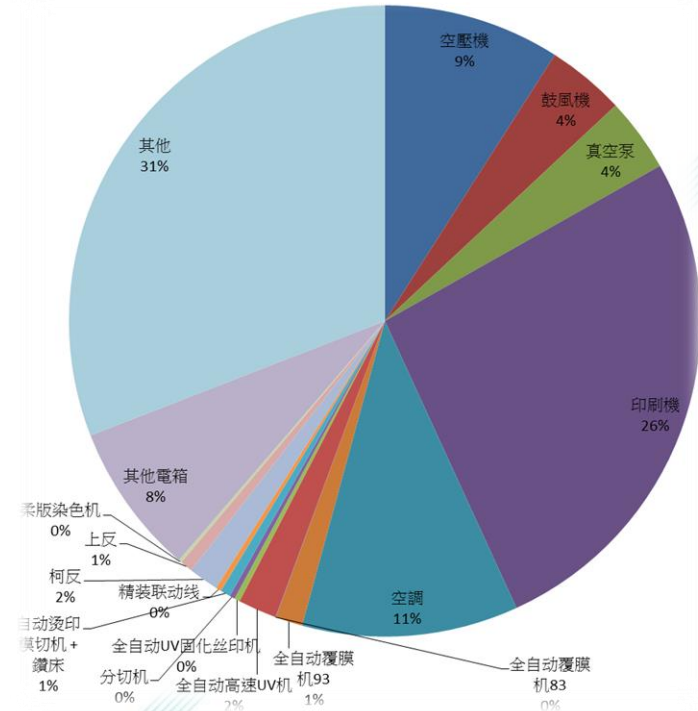
- Energy
- Cost
- GHG Emission



Energy Data Accounting

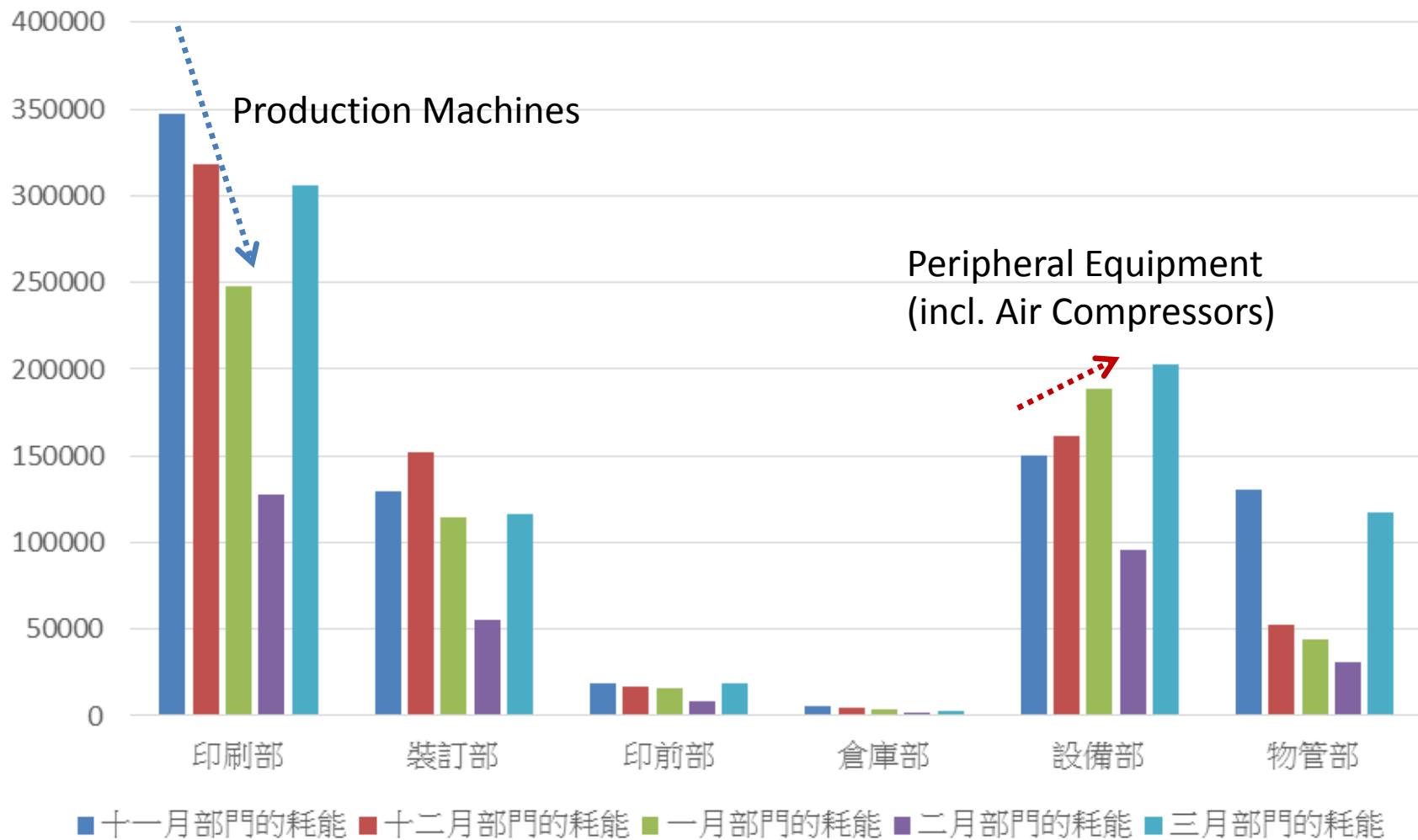


**By Managing
Departments**

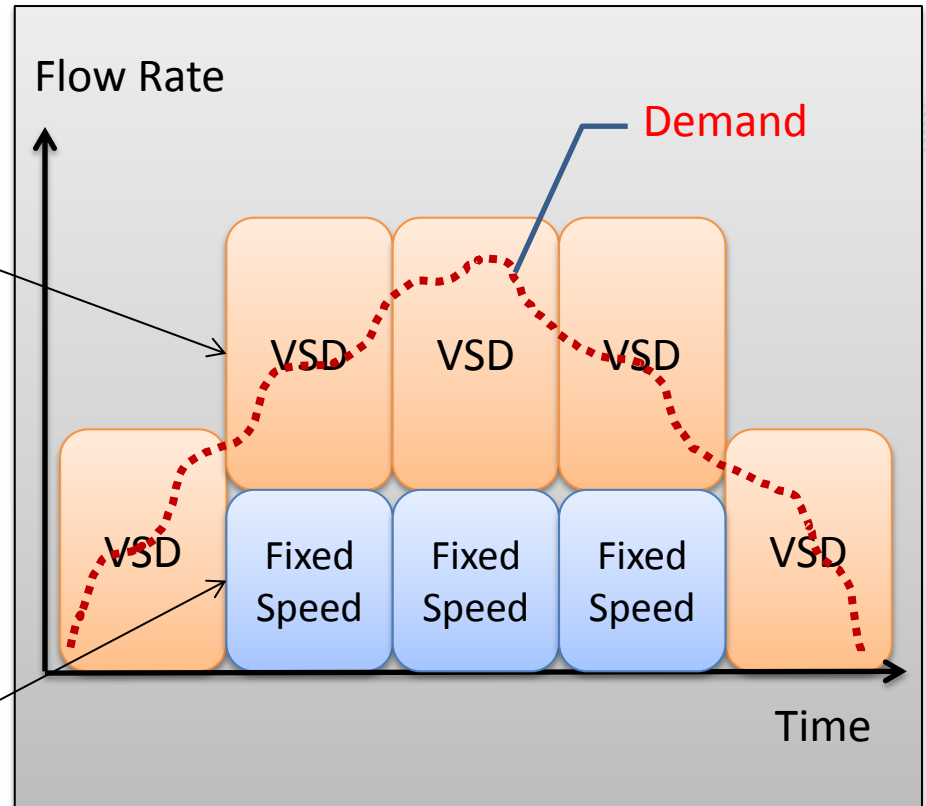
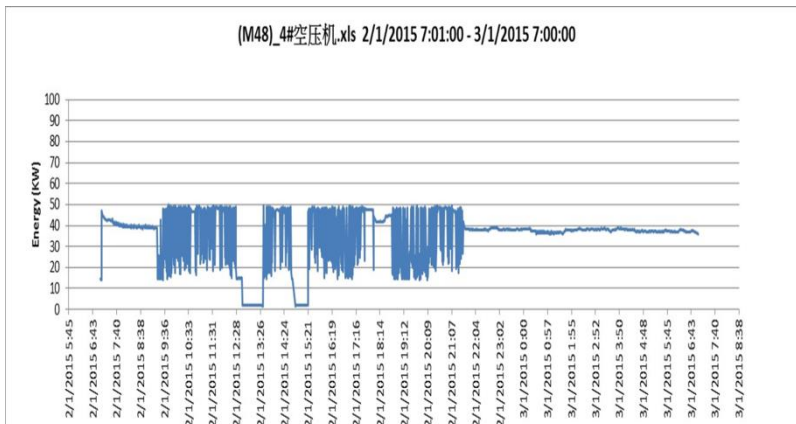
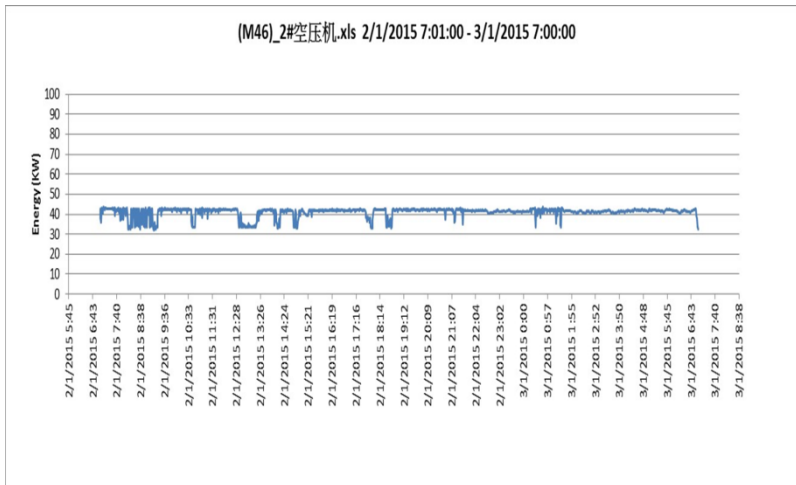


By Machines

Energy Consumption Trend Analysis

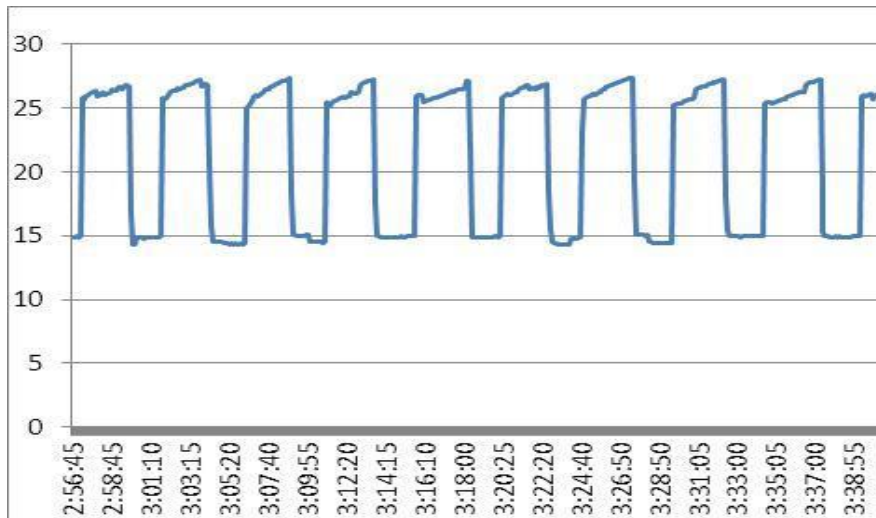


Central Control System Failure



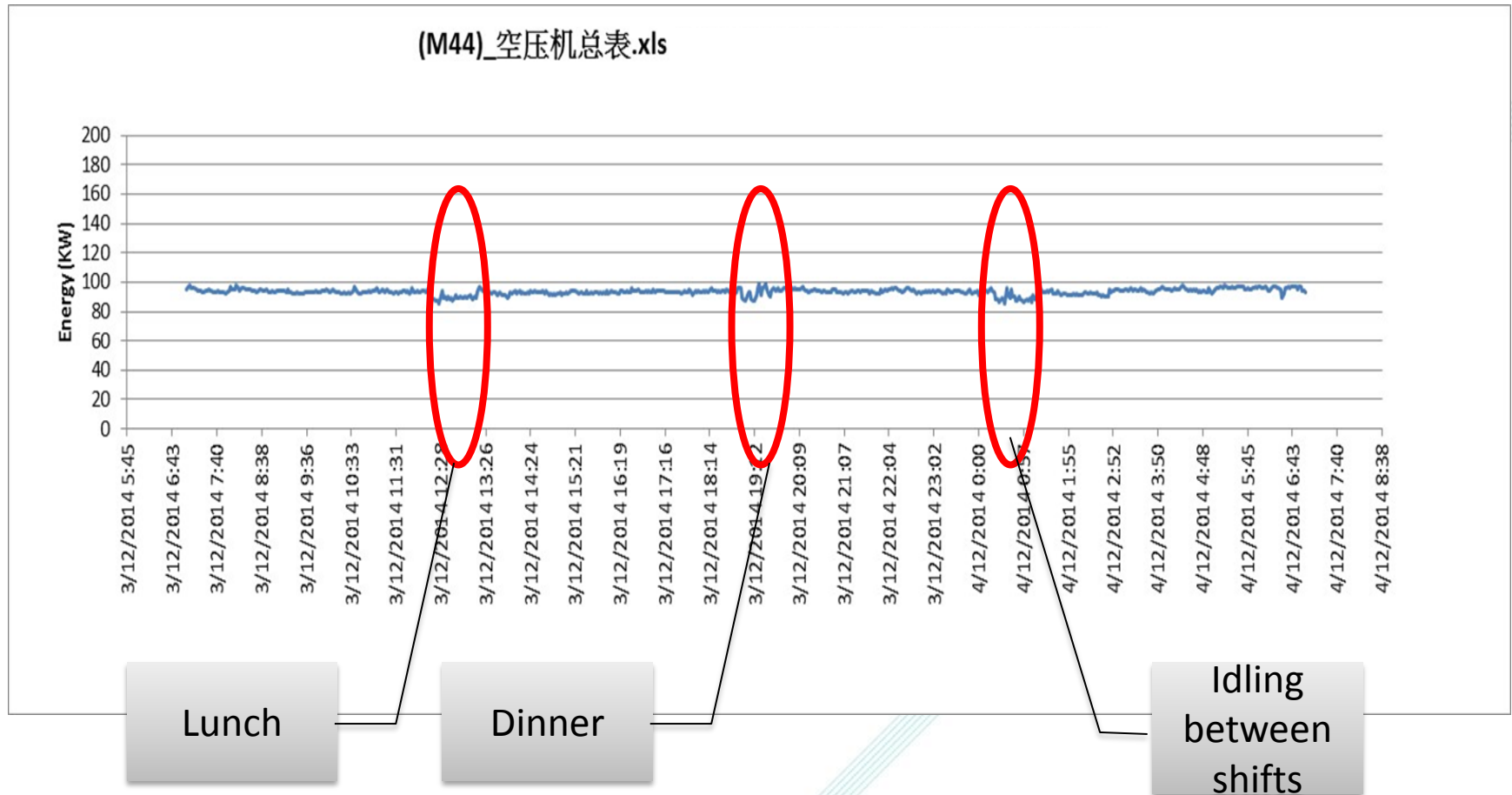
=> Variable Speed Drive is not saving energy due to control failure

Compressed Air Leakage Test



- ❑ Compressor on/off load time ratio during No Demand period
- ❑ Leakage rate 27% (<10% for well maintained systems)

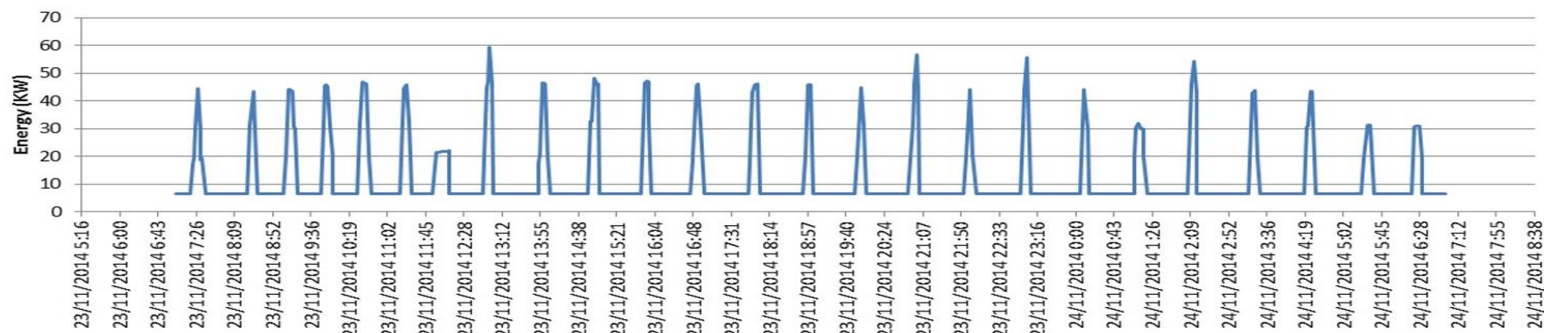
Non-operating time Wastage



Air Conditioning System in Office

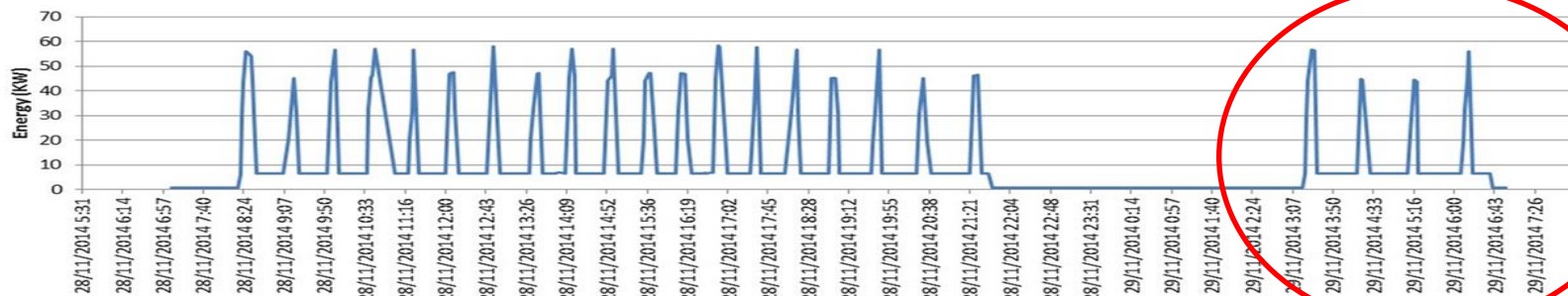
A/C Plant turned on during Holiday:

(M53)_办公楼空调主线.xls

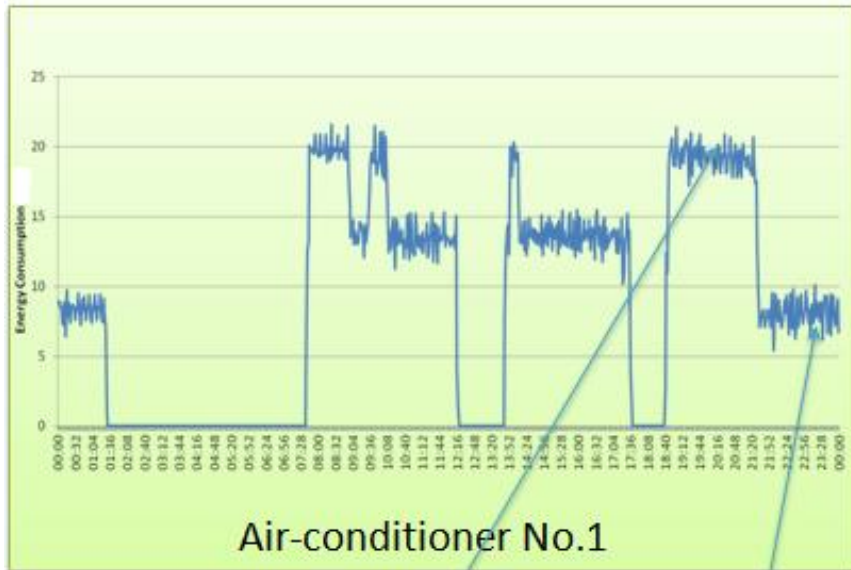


A/C Plant turned on during midnight:

(M53)_办公楼空调主线.xls

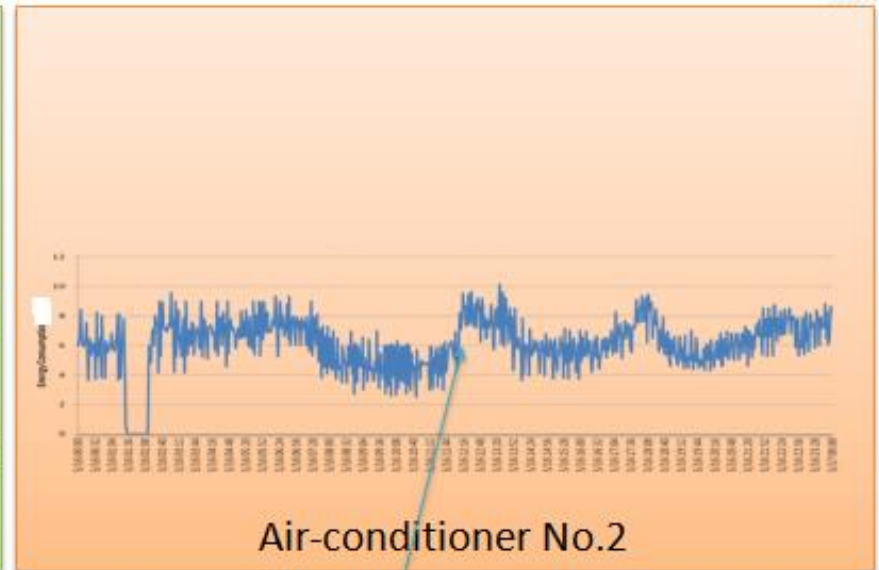


Facilitate Equipment Maintenance



Compressor
+ Fan

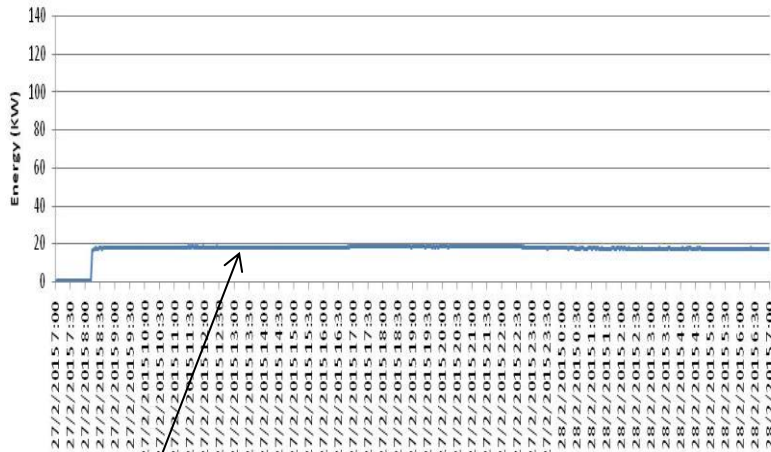
Fan Only



Fan Only

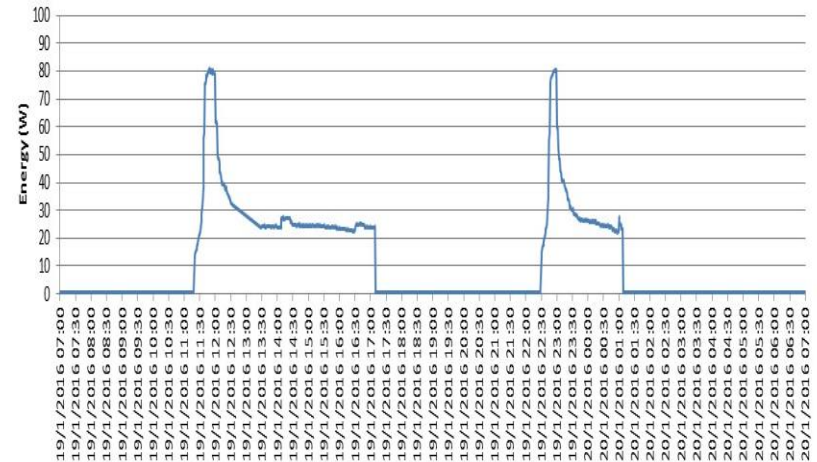
Central Chiller Plant

(M56)_7#空调主机.xls 27/2/2015 7:00:00 - 28/2/2015 7:00:00



Before

(M56)_7#空调主机.xls 19/1/2016 7:00:00 - 20/1/2016 7:00:00

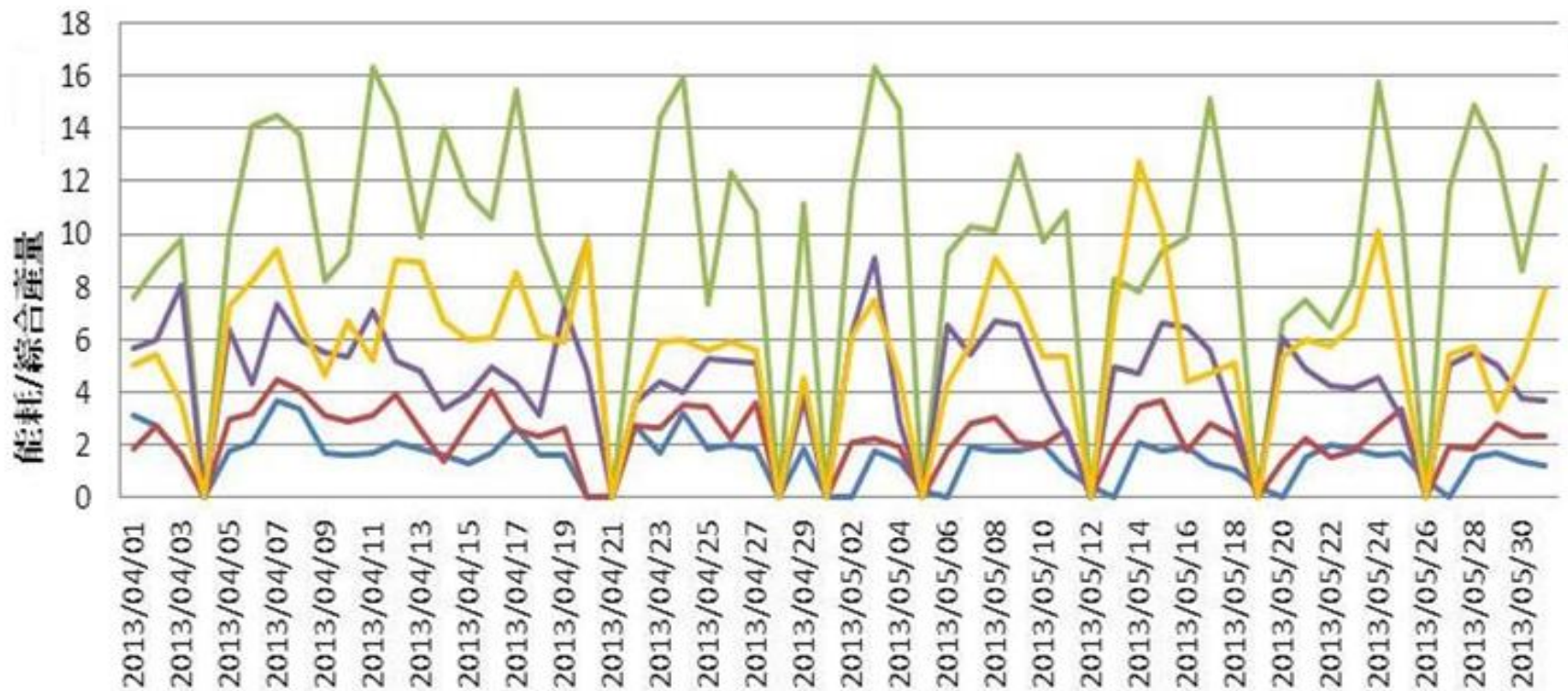


After

Abnormal power consumption for chiller plant
=> Malfunctioning for months but not noticed!

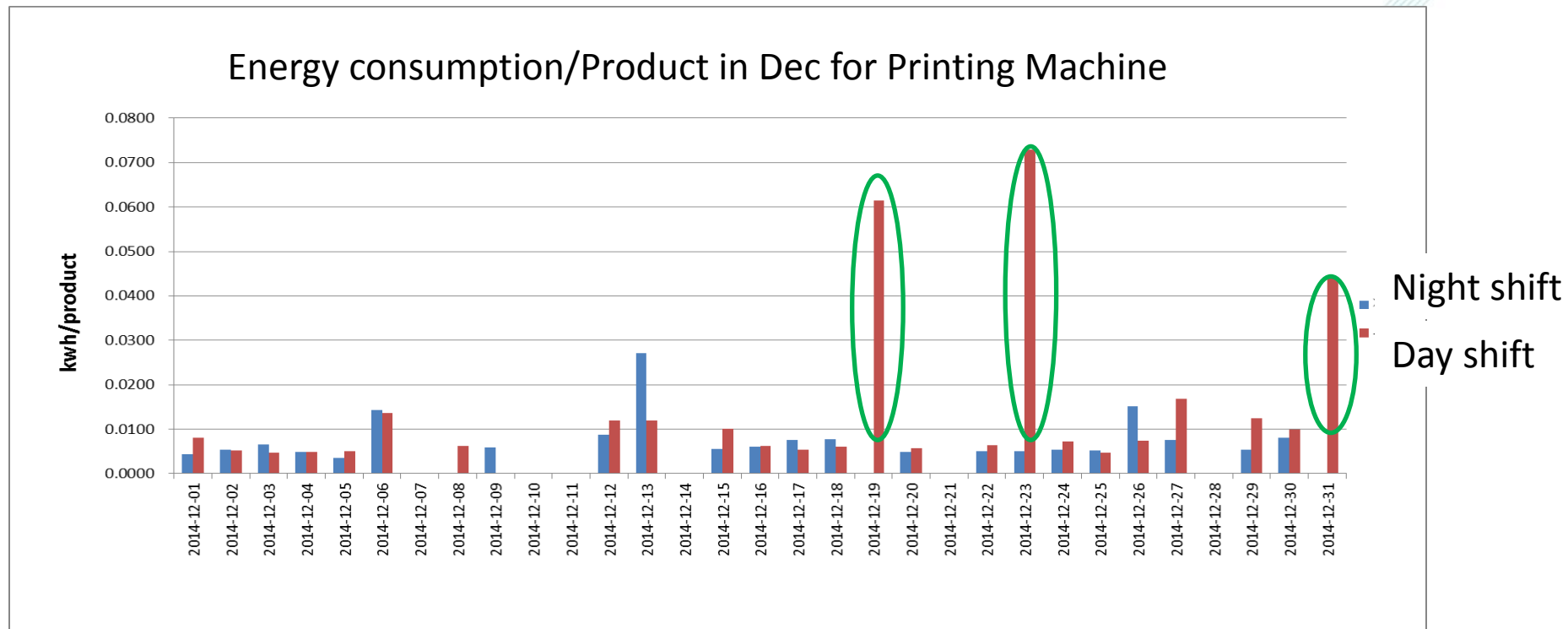
Energy Performance Indicators & Benchmarking

□ Benchmark between different machines



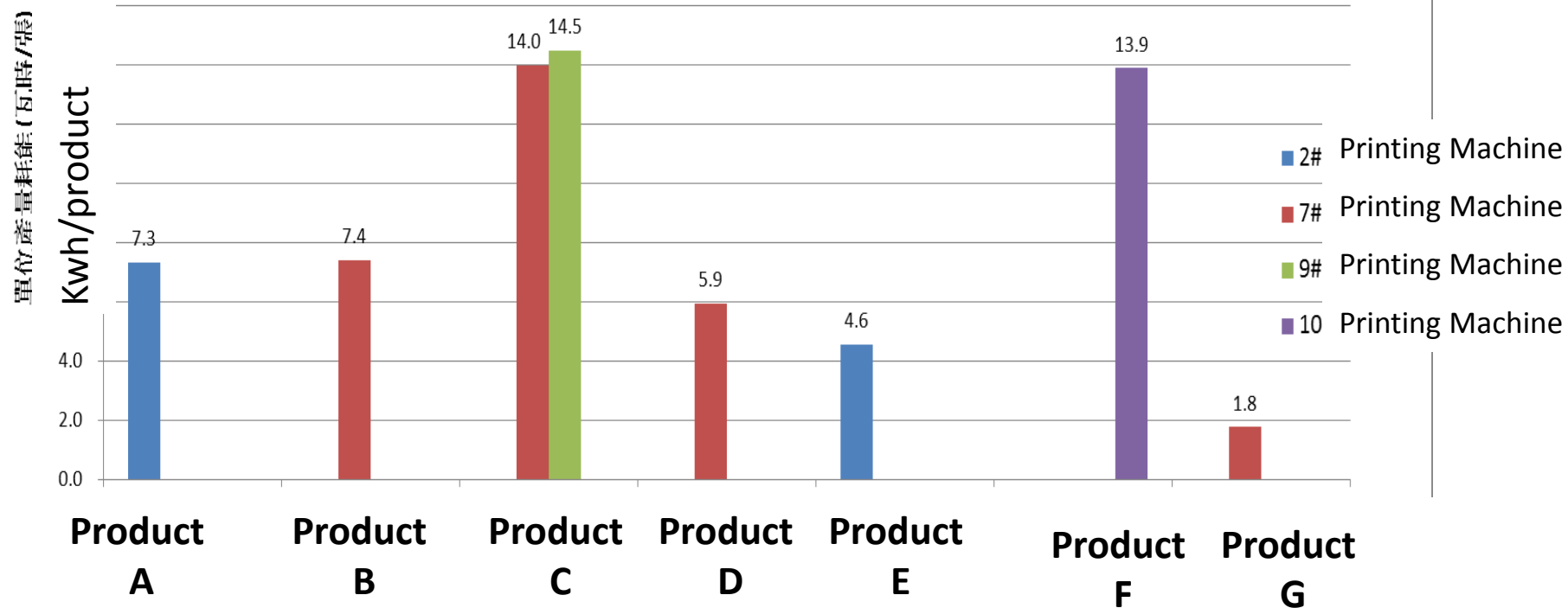
Energy Performance Indicators & Benchmarking

□ Benchmark against different work shifts



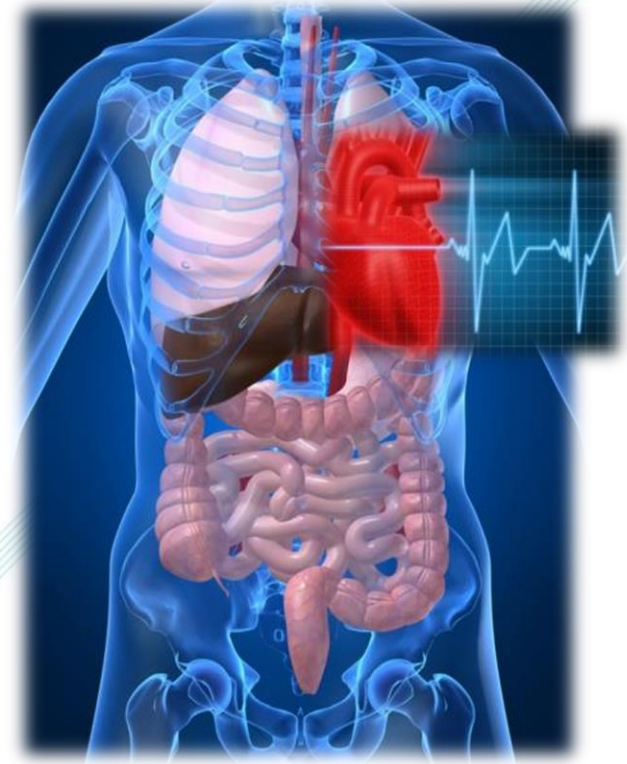
Energy Consumption /Product for different Products

Energy consumption/Product in Feb

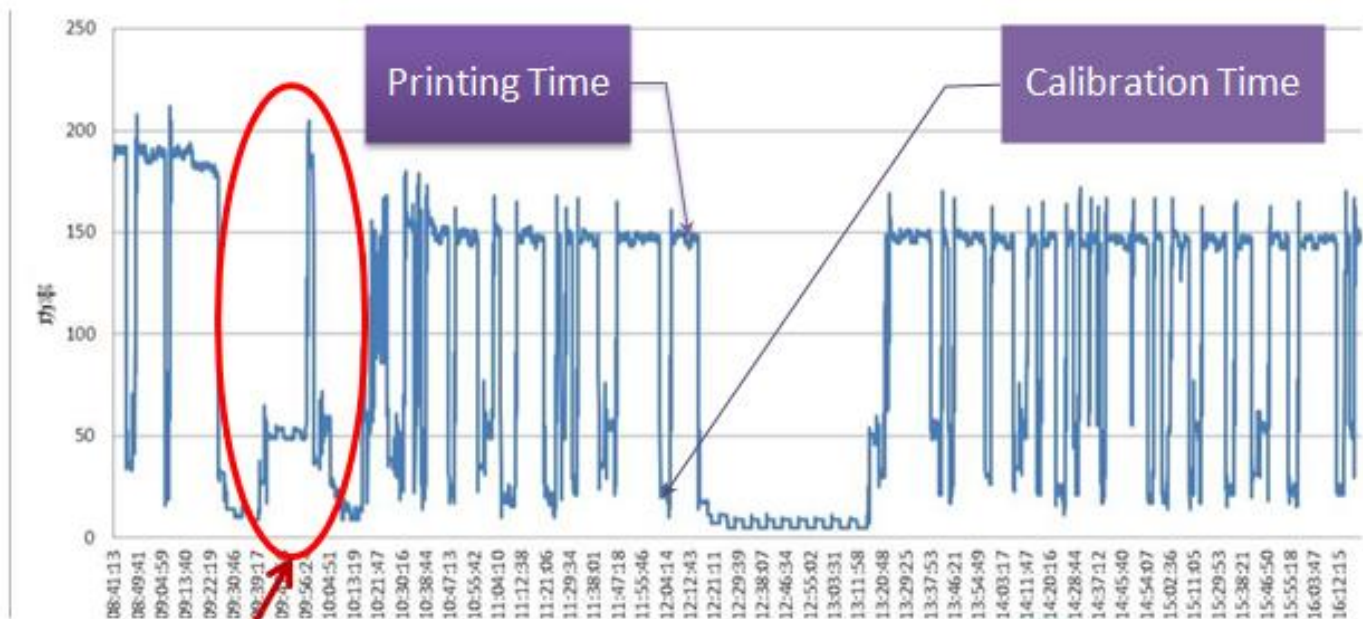


“Cardiograms” of Production Process

- ❑ Historical Record of Production Process
 - ❑ Surveillance on “Health” of Production Process
 - ❑ Potential in Automatic Problem Diagnosis
- ✓ To achieve High **PRODUCTIVITY**

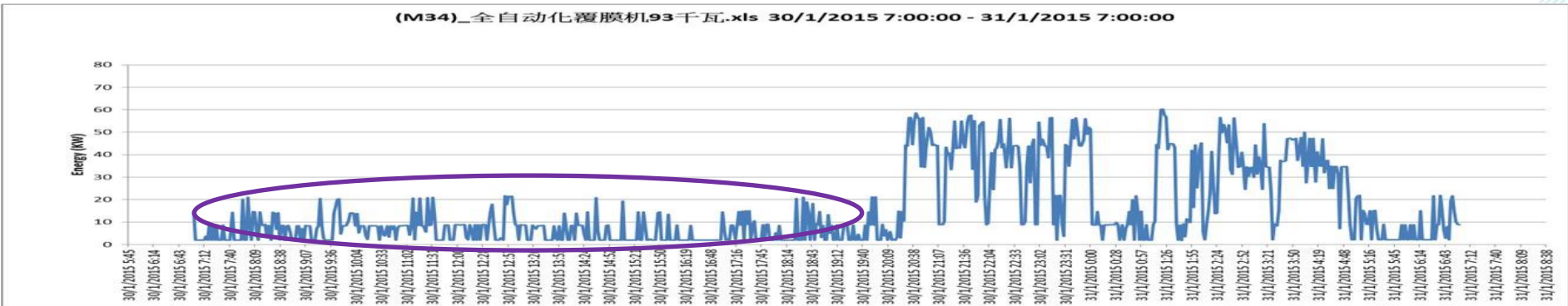


Automated Diagnosis on “Cardiogram” of Printing Machines

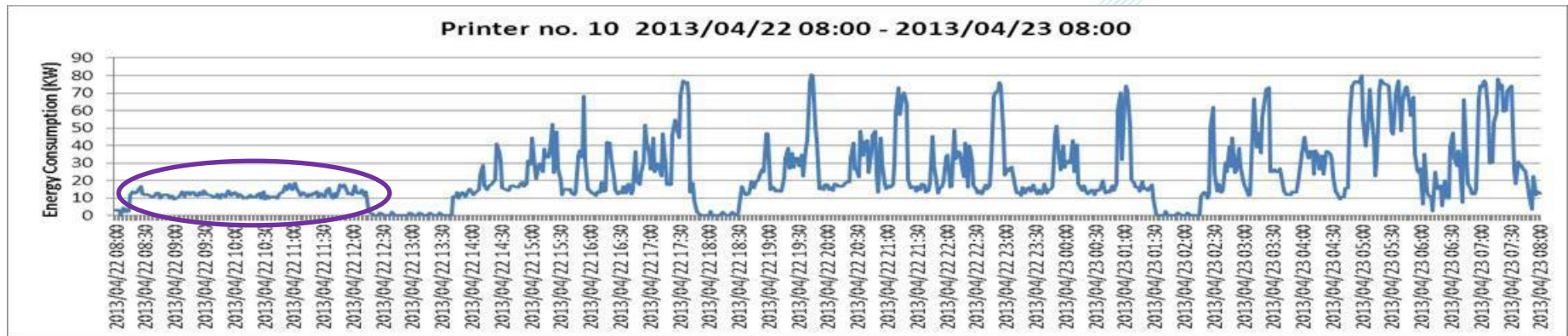


Machine	Unplanned Paper Refills	Long Calibration (>2hrs)	Printing / Calibration Time Ratio
A	12	6	53%
B	6	2	74%
C	8	2	75%
D	3	1	63%

Prolonged standby mode



Prolonged machine calibration



Raise Operators' Awareness



CEO's Confidence in "Investment"

- ❑ FEMS is **NOT** an Energy Saving Measure
- ❑ TOOL for Effective Planning, Implementation
& Verification on ESMs
- ❑ "Payback" varies in different factories

PRODUCTIVITY

ENERGY



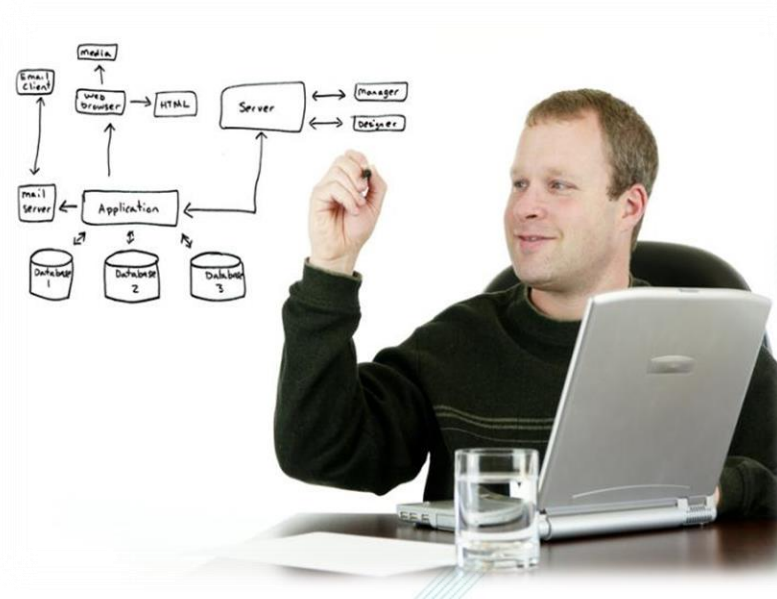
Production & Facility Managers' Support

- ❑ Ready for Revealing “Mal-practices” & “Poor Operation & Maintenance”
- ❑ Collaborate Designer to Develop Useful Performance Indicators



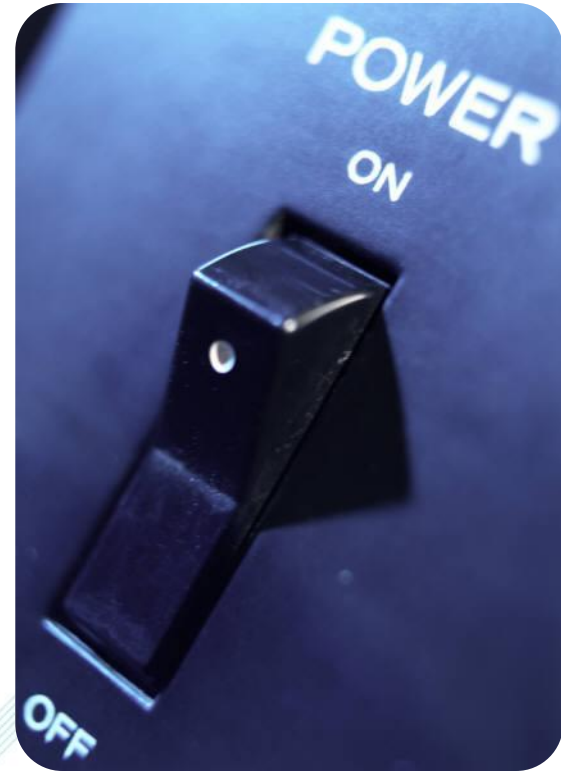
Employ an Energy Manager / Consultant

- ❑ To design and set up the FEMS (Metering Strategy is crucial!)
- ❑ Who knows how to use the FEMS



Good Planning on Project Implementation

- ❑ Interruption on Production
- ❑ Power Suspensions





Thank You!

Ir. Raymond Fong, General Manager

Tel: (852) 2788 5628

Email: rayfong@hkpc.org

